

Product Catalogue

including Spare Parts

www.camlok.co.uk



Camlok
Lifting Clamps

A trading division of Columbus McKinnon Corporation

INTRODUCTION



Foreword by Steve Sherwin, Managing Director, Columbus McKinnon Corporation Limited

The past couple of years have put our industry to the test, and I am pleased to tell you that we believe that with the support of our extensive distributor network, we have come through with flying colours. It has not been an easy time and the coming months and years are unlikely to see a rapid improvement in the business environment. But as we take advantage of the changes and investments we have made - and will continue to make - we have every opportunity to take a bigger share of the market and generate more income for everyone concerned.

Our parent company Columbus McKinnon Corporation (CMCO) is the US market leader and now has around half of its business coming from outside America, giving it the financial stability and resources to support our ambitious plans with new and improved products and services.

There have been many changes in the company over the past few years. We invested in a modern new computer system in Chester to improve our efficiency and service to support our new and existing products. We are in the process of launching a new Camlok Website designed to help you access key sales and technical information.

Our new catalogue represents the latest stage in the company's progress. The new single document contains full details of the Camlok product range. As well as making it easier for everyone to use, it will explain more clearly to users the full strength and depth of product range that you, the distributor, have to offer from one single source of supply.

Other new plans include a new Centre of Training Excellence that will help confirm our authority in the industry, as well as generating income and increased parts and service revenue for our distributors.

Camlok remains one of the most respected companies in the industry as a leading worldwide designer, manufacturer, and marketer of material handling systems and services. The name is a powerful and positive brand for our distributors and we will continue to build its reputation and authority.

One vital element of our strategy however will not change – our total commitment to work 100% through authorised distributors. You will continue to get all the sales enquiries we receive and benefit from a level of lifetime parts and service support without equal, including customer visits to support your own team.

In the coming months we will be continuing to develop and improve the marketing support we provide with upgraded websites, product and industry brochures, literature, posters and other materials that our loyal distributors have long enjoyed.

There are other new products on the horizon to ensure we maintain the standards of excellence in engineering, performance, safety, reliability and value for money that will win us all new customers and build strong and profitable businesses for all our distributors.

Our partnerships have been at the heart of our success. We intend to build ever-stronger business networks and share in the mutual successes that our efforts will surely deliver.

Yours sincerley

A handwritten signature in blue ink that reads "Steve" with a stylized flourish underneath.



Trading divisions of Columbus McKinnon Corporation Limited:

Camlok
Lifting Clamps

Yale
HOISTS

PAFF
silberblau

CM

Duff-Norton

Steerman
Load Moving Systems

MAIN CONTACT DETAILS

INTERNAL SALES



Steve Griffiths
Camlok Product Manager
+44 (0) 1244 391111
steve.griffiths@cmworks.eu

INTERNAL SALES



Ant Worrall
Internal Sales
+44 (0) 1244 391107
ant.worrall@cmworks.eu

GROUP SALES



Paul Kelly
CMCO Sales Manager
+44 (0) 7912 466731
paul.kelly@cmworks.eu

TECHNICAL



Rob Kincla
Engineering Manager
+44 (0) 1244 391114
rob.kincla@cmworks.eu

DESIGN



Paul Harris
Engineering
+44 (0) 1244 391118
paul.harris@cmworks.eu

MARKETING



Rob Wood
Marketing Manager
+44 (0) 7525 323270
rob.wood@cmworks.eu

INVOICING



Jean Clarke
Export/Invoicing
+44 (0) 1244 391109
jean.clarke@cmworks.eu

PURCHASING



Mike Cain
Purchasing
+44 (0) 1244 391112
mike.cain@cmworks.eu

PRODUCTION



Damian Monks
Production
+44 (0) 1244 391103
damian.monks@cmworks.eu

MANAGING DIRECTOR



Steve Sherwin
Managing Director
+44 (0) 7779 164437
steve.sherwin@cmworks.eu

EXPORT DISTRIBUTOR NETWORK

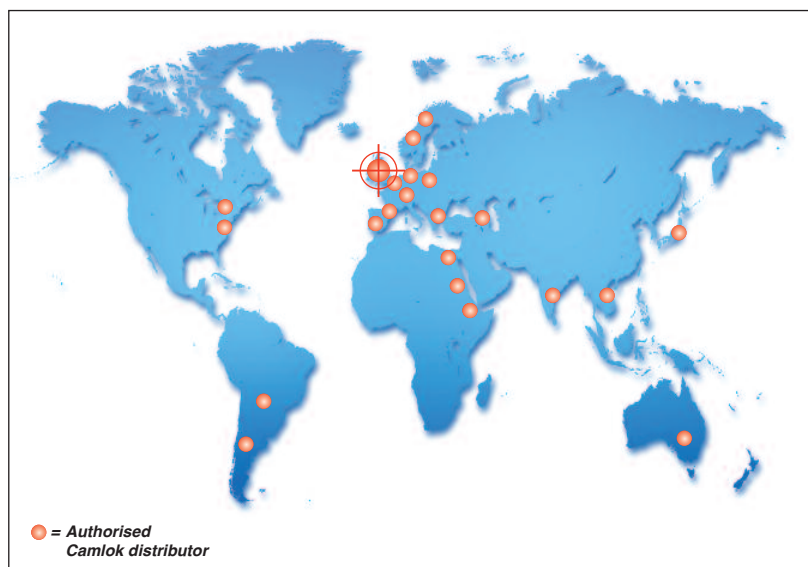
‘100% Distributor sales policy’

As a distributor of Camlok Lifting Clamps, you have a great opportunity to add further income and profit to your bottom line, from dealing with one of the world's leading and most respected suppliers. With a rich 50-year tradition, the company focuses on commercial and industrial applications that require the safety and quality provided by its superior design and know-how.

We operate a 100% distributor sales policy – your only competitors are our competitors, and all enquiries go straight to our distributors. So the way is clear for you to make the most from the products we have to offer.

We back distributors with a total support package of marketing, promotion and training materials, parts, service and technical support. Everything you need and expect from a global force in the industry to help you make more profit.

You can market Camlok products wherever you wish, to any potential user – in sectors such as warehousing, manufacturing, metal stockholding, distribution, construction, ports and docks, airports, railway engineering, electrical and electronics, entertainment, and sports.



TRAINING SCHOOL

At Camlok we believe that training plays a vital part in end-user safety and we are pleased to offer professional training sessions to our customers. We offer two types of training:

1. Lifting clamps and their applications

This training session covers the whole Camlok range of below the hook lifting equipment, explaining in detail how the clamps operate and the correct application of each clamp. The session is mainly sales orientated.

2. Lifting clamps examination and testing

This training session has been designed for the benefit of Works Engineers responsible for the examination, repair and testing of clamps. For our export partners, we can offer onsite training, either at your premises or your customer's premises.

If you are interested in attending a training session, or if you want some more details, then contact the training department at: training@cmworks.eu



MARKETING SUPPORT

Continuing our commitment to our distribution partners, we have developed many product / industry specific brochures, product charts, safety posters, flyers, interactive CD's, DVD's, videos, and websites.

Please contact our marketing department for all literature, posters, images, videos, photographs, web site advice, CDs, fonts, or logos.

We are happy to release the copyright of all our images for use on distributors web sites or in their own brochures providing that prior written consent is obtained from Camlok Lifting Clamps.



PRODUCT DOCUMENTATION

All Camlok Lifting Clamps are supplied with comprehensive operating instructions.

Also included is an EC Declaration of Conformity which confirms the tested status of the product.

Additional documentation such as spare parts manuals or maintenance and repair instructions, technical drawings etc. are available on request.

Duplicate copies of the operating manuals and spare parts lists are available to download from our website or by contacting the Camlok sales team.



QUALITY & SAFETY

Camlok is a member of the Lifting Equipment Engineers Association (L.E.E.A) and all clamps are designed and manufactured in accordance with ISO9001:2008. Camlok is accredited by BSI and all external suppliers of components and materials must also be accredited to a recognised quality standard. All Camlok products are proof load tested prior to despatch and our test and inspection facilities are subject to annual independent calibration.

Safety is our top priority. Camlok products are proof load tested to twice their working load limit. A Certificate of Conformity, containing test information, is issued with each clamp. Operator instructions showing correct use the product and specifying the correct application of the clamp, are also supplied. Please note that the purchaser has a legal obligation to ensure that the operator has access to the operating instructions prior to the item being put into use.



**Lifting Equipment
Engineers Association**

CONTENTS PAGE



Introduction / contact details / contents page **2-5**

Vertical plate clamps **6-9**

Horizontal plate clamps **10-12**



Wide jaw grabs **13**

Non-marking plate clamps **14**

Screw clamps **15**



Beam clamps **16-17**

Bulb bar clamps **17-18**

Girder clamps **18-19**



Rail handling **20-21**

Manual lifting / magnetic claws **22-23**

Groundworks **24-25**



Crane forks **26-27**

Drum handling **28-29**

Grabs **30-31**



Coil handling **31-33**

Container lifting lugs **34**

Paper handling **35**



Bag lifters / fork lift truck tine hooks **36**

Safety cages / shearlegs **37**

Spreaders, beams, jibs and gantries **38**



Camlok "specials" **39**

Camlok genuine spare parts **40-43**

Safety information **44-45**



Index **46**

Terms and conditions **47**

92 SERIES VERTICAL PLATE CLAMPS



Standard plate clamps with safety lock

Working load limit (WLL) 500 - 3000kgs

These clamps are primarily used for transporting sheet metal and steel plates in the vertical position, as well as lifting and rotating through 180°.

They can also be used for transporting steel constructions and profiles. It is recommended to use a pair of plate clamps in conjunction with a spreader beam for long materials which have a tendency to sag or flex.

Function

The jaw is opened and closed with the locking lever except for the 92-500 which uses a positive spring-loaded cam.

The safety lock spring loads the cam jaw, preventing the clamp from opening even when there is no load.

Workmanship and parts

These plate clamps are service-friendly, making it easy to exchange parts, which are readily available. Clamp repairs are available through the factory, or can be done by a competent person.

The 92-500 is equipped with positive spring-loaded cam, but comes without locking lever.

NB: The plate surface of the material must have a hardness level below HRC 30/Brinell 300.

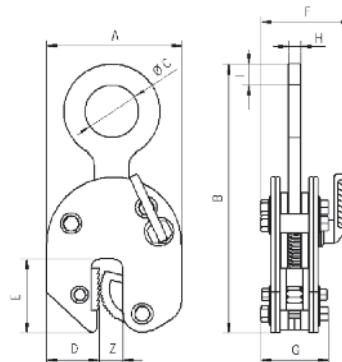


Model	WLL kgs*	Jaw (Z) capacity mm	A mm	B mm	C mm	D mm	E mm	F mm	G mm	H mm	I mm	Weight kgs**
92-500	50 - 500	0 - 16	99	195	29	33	47	50	48	11	15	1.5
92-1500	150 - 1500	0 - 20	126	225	50	49	70	82	55	13	20	3.0
92-2000	200 - 2000	0 - 32	192	312	80	75	96	100	81	20	24	8
92-3000	300 - 3000	0 - 32	192	320	80	75	96	100	81	30	30	12

PLEASE NOTE: Units are supplied as standard with a hook ring. Link fitting and chain are available on request as a special order.

*Per clamp.

**Weight per clamp with hook ring.



92 Series plate clamps

Working load limit 500 - 3000kgs

CZ 'HEAVY DUTY' VERTICAL PLATE CLAMPS



Heavy duty plate clamps with safety lock

Working load limit (WLL) 1000 - 30000kgs

These clamps are primarily used for transporting sheet metal and steel plates in the vertical position, as well as lifting and rotating through 180°.

They can also be used for transporting steel constructions and profiles. It is recommended to use a pair of plate clamps in conjunction with a spreader beam for long materials which have a tendency to sag or flex.

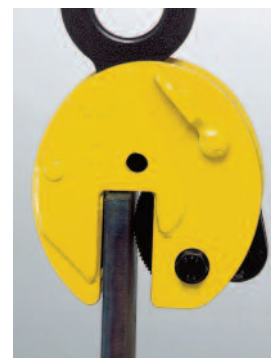
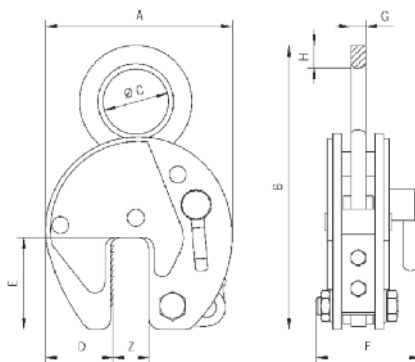
Function

The jaw is opened and closed with the locking lever. The safety lock spring loads the cam jaw, preventing the clamp from opening even when there is no load.

Workmanship and parts

These plate clamps are service-friendly, making it easy to exchange parts, which are readily available. Clamp repairs are available through the factory, or can be done by a competent person.

NB: The plate surface of the material must have a hardness level below HRC 30/Brinell 300.



Model	WLL kgs*	Jaw (Z) capacity mm	A mm	B mm	C mm	D mm	E mm	F mm	G mm	H mm	Weight kgs**
CZ 1	100 - 1000	0 - 20	140	254	51	48	70	83	13	19	4
CZ1L	100 - 1000	20 - 40	161	260	51	48	70	83	20	19	5
CZ 2	200 - 2000	0 - 32	197	323	67	68	93	110	20	20	11
CZ 2L	200 - 2000	30 - 60	228	330	67	68	93	110	20	20	13
CZ 3	300 - 3000	0 - 32	197	371	80	68	93	110	20	30	12
CZ 3L	300 - 3000	30 - 60	228	390	80	68	93	110	20	30	15
CZ4	480 - 4000	0 - 32	197	371	80	68	93	129	20	30	12
CZ 4L	480 - 4000	30 - 60	228	390	80	68	93	129	20	30	18
CZ 6	720 - 6000	0 - 50	293	484	89	95	143	129	25	35	21
CZ 6L	720 - 6000	50 - 100	362	524	89	95	143	129	25	35	28
CZ 8	960 - 8000	0 - 50	293	492	89	95	143	129	25	42	26
CZ 8L	960 - 8000	50 - 100	362	524	89	114	143	129	25	42	32
CZ 10	1500 - 10000	0 - 50	293	545	110	95	143	139	25	45	30
CZ 10L	1500 - 10000	50 - 100	362	545	110	114	143	139	25	45	37
CZ 12	1800 - 12000	0 - 50	360	613	130	125	162	154	30	55	54
CZ 12L	1800 - 12000	50 - 100	460	678	130	175	162	154	30	55	63
CZ 15	3000 - 15000	0 - 50	360	613	130	125	162	204	45	55	75
CZ 15L	3000 - 15000	50 - 100	460	678	130	175	162	204	45	55	88
CZ 20	4000 - 20000	0 - 65	462	755	130	165	210	235	45	65	123
CZ 20L	4000 - 20000	65 - 130	560	805	130	195	210	235	45	65	136
CZ 30	6000 - 30000	0 - 65	462	732	60	165	210	295	65	-	195
CZ 30L	6000 - 30000	65 - 130	560	797	60	195	210	295	65	-	295

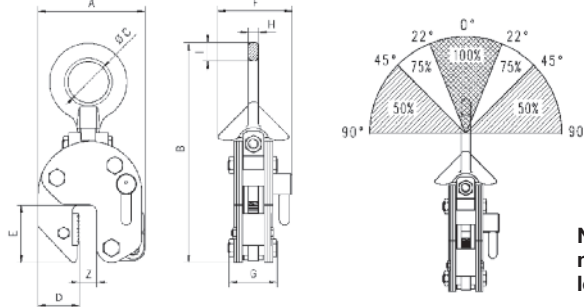
PLEASE NOTE: Units are supplied as standard with a hook ring. Link fitting and chain are available on request as a special order. Also available with 'Sharp Leg' body shell or extra thick shell plates for dragging. Please contact sales team for further details and prices.
*Per clamp. **Weight per clamp with hook ring.

CY 'HINGED' VERTICAL PLATE CLAMPS (TWO LEG CHAIN SLING)



The CY plate clamps with hinged hook rings can be used for the safe handling of plate at various angles. It can lift plate from the horizontal and put down in the vertical. The hinged hook ring ensures adequate gripping pressure in every position, but the load capacity is reduced as seen in the diagram below showing the load / force capacities.

The main benefit of the CY hinged plate clamps is that longer plates can be lifted or handled, using two clamps on a two legged chain sling (as shown in illustration), thus eliminating the need for a spreader beam.



Typical application.

NB: The plate surface of the material must have a hardness level below HRC 30/Brinell 300.

Model	WLL kgs*	Jaw (Z) capacity mm	A mm	B mm	C mm	D mm	E mm	F mm	G mm	H mm	I mm	Weight kgs**
CY1	200 - 1000	0 - 20	126	270	50	49	70	95	63	12	23	4.6
CY2	400 - 2000	0 - 32	192	382	80	75	96	132	92	20	30	14
CY3	600 - 3000	0 - 32	192	382	80	75	96	132	92	20	30	14

*Per clamp.

**Weight per clamp without chains.

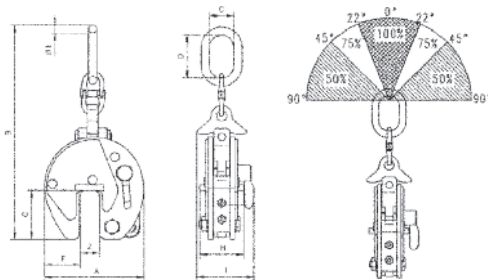
CX 'HINGED' VERTICAL PLATE CLAMPS (HEAVY DUTY - SIDE LOADING)



The CX plate clamps shares all the benefits of the CY clamps, but are specifically designed for more heavy duty applications.

The other benefit that the CX clamps offers over the CY clamps is that vertically racked plates can be turned through 90° (as shown in illustration).

NB: The plate surface of the material must have a hardness level below HRC 30/Brinell 300.



Typical application.

Model	WLL kgs*	Jaw (Z) capacity mm	A mm	B mm	C mm	D mm	E mm	F mm	G mm	H mm	I mm	Weight kgs**
CX1500	225 - 1500	0 - 20	140	399	63	125	12.5	48	70	57	83	7
CX3000	450 - 3000	0 - 32	197	515	67	138	19	68	93	81	110	12
CX3000L	450 - 3000	30 - 60	227	515	67	138	19	68	93	81	110	15
CX6000	1200 - 6000	0 - 50	292	737	95	176	28	95	143	137	188	38
CX6000L	1200 - 6000	50 - 100	367	785	98	180	28	115	143	135	188	48
CX8000	1600 - 8000	0 - 50	292	737	98	176	28	95	143	136	210	39
CX8000L	1600 - 8000	50 - 100	367	785	98	180	28	115	143	136	210	51
CX10000	2000 - 10000	0 - 50	360	903	110	195	33	125	162	170	223	61
CX10000L	2000 - 10000	50 - 100	446	921	112	195	33	168	162	170	223	76

*Per clamp.

**Weight per clamp without chains.

HG 'HIGH GRIP' VERTICAL PLATE CLAMPS



Vertical 'high grip' plate clamps for hardened material

Working load limit (WLL) 500 - 4000kgs

HG plate clamps have an extremely high clamping force which makes the clamps particularly suited to the transport of plate with a surface hardness up to HRC 40/Brinell 375.

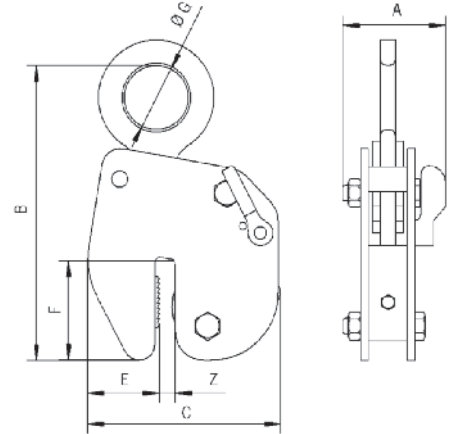
NB: The plate surface of the material must have a hardness level below HRC 40/Brinell 375.

Function

These clamps are opened and closed with a locking lever. The safety lock spring loads the cam jaw, preventing the clamp from opening even when there is no load.

Workmanship and parts

These plate clamps are service-friendly, making it easy to exchange parts, which are readily available. Clamp repairs are available through the factory, or can be done by a competent person.



Model	WLL kgs*	Jaw (Z) capacity mm	A mm	B mm	C mm	D mm	E mm	F mm	G mm	Weight kgs**
HG500	25 - 500	0 - 10	42	230	148	10	55	79	50	5
HG1000	50 - 1000	0 - 16	93	297	210	16	75	114	67	12
HG2000	200 - 2000	0 - 20	110	416	305	20	102	159	80	22
HG3000	300 - 3000	0 - 20	110	416	305	20	102	159	80	27
HG4000	400 - 4000	0 - 20	120	335	305	20	102	159	80	32

*Per clamp.

**Weight per clamp.

TJC 'TWIN JAW' VERTICAL PLATE CLAMPS



The TJC twin jaw vertical plate clamps have been specifically designed for lifting steel plates. The main difference, however between the TJC and the CZ (which is our standard vertical plate clamp) is that the TJC has a unique twin moving jaw arrangement.

The design of the twin moving jaws means that the TJC can be used in applications that require a larger than usual jaw capacity but with a low minimum weight.

NB: The plate surface of the material must have a hardness level below HRC 30/Brinell 300.

Model	WLL kgs*	Jaw capacity mm	Weight kgs**
TJC300	20 - 300	0 - 30	3
TJC300L	20 - 300	30 - 60	3
TJC300XL	20 - 300	60 - 90	4
TJC300XXL	20 - 300	80 - 110	5

PLEASE NOTE: Please contact our sales team for full technical drawings if required.

*Per clamp. **Weight per clamp.

CH/HH HORIZONTAL PLATE CLAMPS

**SOLD
IN
PAIRS**

Industry standard horizontal plate clamps

Working load limit (WLL) 1000 - 10000kgs

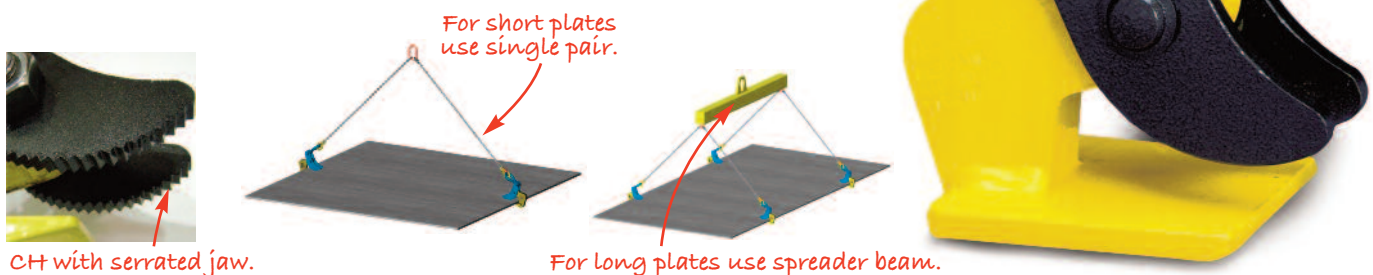
The **CH horizontal plate clamps** have been specifically designed to be used, in pairs, for the transportation of plate bundles as well as single plates with a minimum thickness of 5mm.

A pair of clamps used with a two legged chain sling are suitable for small plates. It is recommended to use two pairs in conjunction with a spreader beam for handling of larger plates. These units are supplied as standard with a smooth jaw. There is also the option of hardened steel teeth for special applications. Please contact our technical department for further details.

The **HH horizontal plate clamps** incorporate all of the features of the CH clamps, yet are manufactured from high strength steel giving them exceptionally low tare weights.

Workmanship and parts

These plate clamps are service-friendly, making it easy to exchange parts, which are readily available. Clamp repairs are available through the factory, or can be done by a competent person.



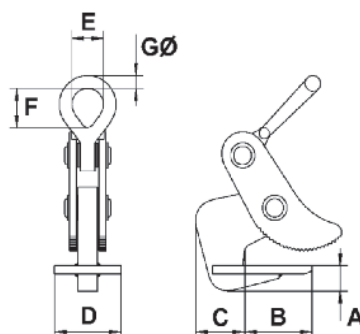
Model	WLL kgs*	Jaw capacity mm	A mm	B mm	C mm	D mm	E mm	F mm	G mm	Weight kgs**
CH1	1000	5 - 32	15	82	60	100	32	44	13	8
CH2	2000	5 - 32	30	82	60	100	50	73	18	11
CH2L	2000	20 - 50	30	82	60	100	50	73	18	12
CH4	4000	5 - 50	40	112	80	100	64	92	25	17
CH4L	4000	50 - 100	40	112	80	100	64	92	25	23
CH6	6000	5 - 75	55	172	100	130	90	130	35	46
CH6L	6000	50 - 125	55	172	100	130	90	130	35	56
CH8	8000	5 - 75	55	172	105	130	90	130	35	53
CH8L	8000	50 - 125	55	172	105	130	90	130	35	60
CH10	10000	5 - 100	65	215	120	150	114	114	35	95
CH10L	10000	50 - 150	65	215	120	150	114	114	35	108
HH8	8000	5 - 50	55	168	105	130	67	67	24	21
HH8L	8000	50 - 100	55	168	105	130	67	67	24	28

*Per pair.

**Weight per pair of clamps without chains.



*Chain slings NOT included.



NB: The angle between the chain / rope legs must not exceed 90° (45° from vertical).

NB: These units must NOT be used with endless chain slings.

RH/WH/WHL/WHP HORIZONTAL PLATE CLAMPS

SOLD IN PAIRS

Horizontal plate clamps

Working load limit (WLL) 1500 - 5000kgs

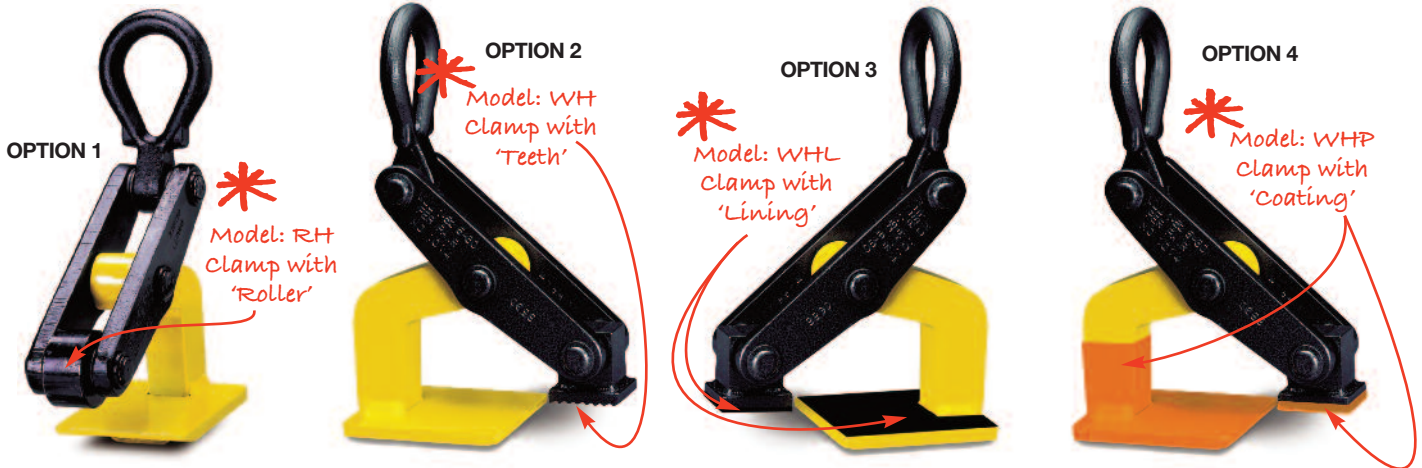
This range of horizontal plate clamps has been designed, to be used in pairs, for the horizontal transporting of individual and bundled plate. Whilst the basic design and function is the same, there are four options available.

OPTION 1 - RH. This range is fitted with a steel roller for reduced marking of the plates.

OPTION 2 - WH. The jaw on this range has hardened steel teeth for applications where the marking of plates is not an issue.

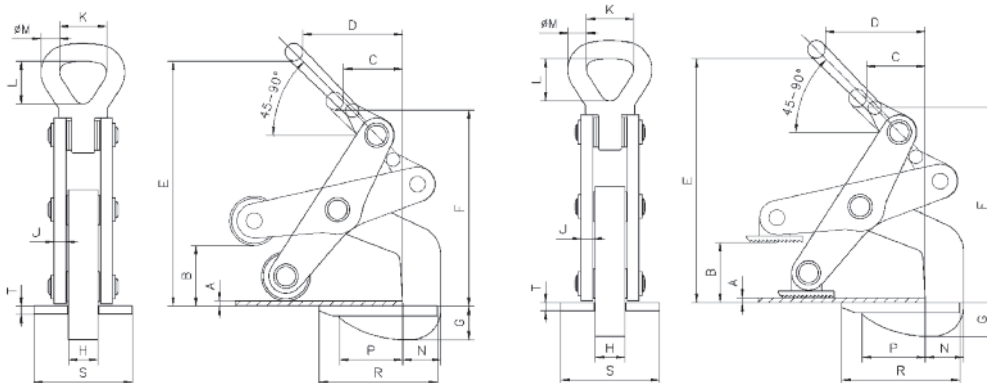
OPTION 3 - WHL. With a protective rubber lining on the jaw and the toe plate, this range totally eliminates any risk of marking.

OPTION 4 - WHP. With a protective polyurethane coating completely encasing the jaw and the toe plate.



	Model	WLL kgs*	Jaw capacity mm	A mm	B mm	C mm	D mm	E mm	F mm	G mm	H mm	J mm	K mm	L mm	M mm	N mm	P mm	R mm	S mm	T mm	Weight kgs**
ROLLER	RH1500	1500	5 - 60	5	60	60	105	259	212	31	30	12	50	73	18	36	65	120	100	10	12
	RH2500	2500	10 - 70	10	70	75	130	327	276	45	30	12	64	92	25	58	77	150	100	10	21
	RH3500	3500	10 - 80	10	80	90	162	348	294	55	30	15	64	92	25	65	105	185	100	10	28
	RH5000	5000	10 - 100	10	100	110	170	432	348	55	45	20	89	130	35	80	120	210	120	12	72
TEETH	WH1500	1500	5 - 60	5	60	60	105	259	212	31	30	12	50	73	18	36	65	120	100	10	12
	WH2500	2500	10 - 70	10	70	75	130	327	276	45	30	12	64	92	25	58	77	150	100	10	21
	WH3500	3500	10 - 80	10	80	90	162	348	294	55	30	15	64	92	25	65	105	185	100	10	28
	WH5000	5000	10 - 100	10	100	110	170	432	348	55	45	20	89	130	35	80	120	210	120	12	72
LINING	WHL1500	1500	5 - 55	5	55	60	105	256	209	31	30	12	50	73	18	36	65	120	100	13	12
	WHL2500	2500	10 - 65	10	65	75	130	324	273	45	30	12	64	92	25	58	77	150	100	13	21
	WHL3500	3500	10 - 75	10	75	90	162	345	291	55	30	15	64	92	25	65	105	185	100	13	28
	WHL5000	5000	10 - 97	10	97	110	170	429	345	55	45	20	89	130	35	80	120	210	120	15	72
COATING	WHP1500	1500	5 - 57	5	57	60	105	256	209	31	36	12	50	73	18	39	68	126	100	13	12
	WHP2500	2500	10 - 67	10	67	75	130	324	273	45	36	12	64	92	25	61	80	156	100	13	21
	WHP3500	3500	10 - 77	10	77	90	162	345	291	55	36	15	64	92	25	68	108	191	100	13	28
	WHP5000	5000	10 - 97	10	97	110	170	429	345	55	51	20	89	130	35	83	123	216	120	15	72

*Per pair. **Weight per pair of clamps without chains.



WH Horizontal plate clamps
Working load limit 1500 - 5000kgs*

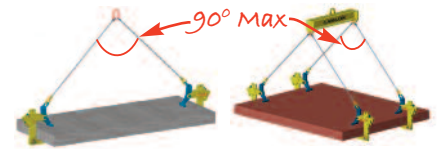
ACH 'ADJUSTABLE' HORIZONTAL PLATE CLAMPS



*Chain slings NOT included.

The ACH horizontal plate clamps offer superb flexibility because of the large adjustable jaw opening. The jaw is adjusted using a simple ratchet mechanism.

These clamps are to be used in pairs and are especially suited to the transportation of large plate bundles.



*Use spreader beams for larger plates.

Model	WLL kgs*	Jaw capacity mm	Weight kgs**
ACH 1300	1300	0 - 150	14
ACH 1300L	1300	0 - 250	17
ACH 3300	3300	0 - 150	25
ACH 3300L	3300	0 - 250	28
ACH 6650	6650	0 - 150	60
ACH 6650L	6650	0 - 250	64

PLEASE NOTE: Other sizes are available on request. Please contact our sales team for details.

*Per pair. **Weight per pair of clamps without chains.

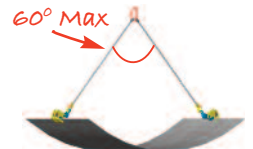
THK 'THIN SHEET' HORIZONTAL PLATE CLAMPS



*Chain slings NOT included.

The THK horizontal plate clamps share the same basic design features as the CH range of clamps but have a reversed jaw design. This acts as an additional safety feature specifically for use with thin sheets which may have a tendency to deflect or sag or flex.

The THK clamps are particularly suited to thin plate with a surface hardness less than 300 Brinell / 32 Rockwell C.



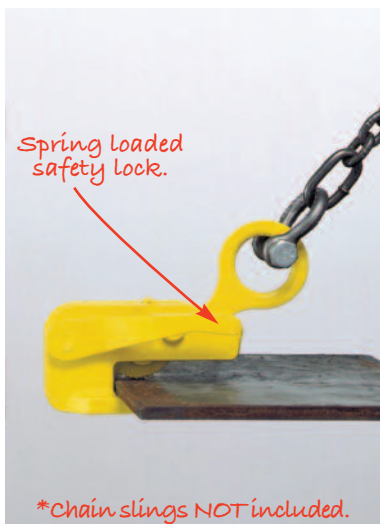
*Ideal for thin sheet.

Model	WLL kgs*	Jaw capacity mm	Weight kgs**
THK 750	40 - 750	0 - 25	3
THK 1500	75 - 1500	0 - 35	6
THK 3000	150 - 3000	0 - 35	11
THK 4500	225 - 4500	0 - 45	16
THK 6000	300 - 6000	0 - 60	23
THK 9000	450 - 9000	0 - 60	35

PLEASE NOTE: Please contact our sales team for full technical drawings if required.

*Per pair. **Weight per pair of clamps without chains.

THS 'LOADING' HORIZONTAL PLATE CLAMPS



Spring loaded safety lock.

*Chain slings NOT included.

The THS horizontal plate clamps are specifically designed to be used when loading plate horizontally into presses, shears, guillotines and other industrial machines or where the CH clamps are not suitable.

The unique design of the THS allows them to be used individually when loading plate. However, when transporting plate horizontally the THS clamps should be used in pairs.

Other features of this clamp include a spring loaded safety lock that ensures the clamp remains on the plate in the unloaded position prior to lifting. Maximum plate surface hardness 300 Brinell / 32 Rockwell C.

Model	WLL kgs*	Jaw capacity mm	Weight kgs**
THS 750	40 - 750	0 - 20	3
THS 1500	75 - 1500	0 - 35	6
THS 3000	150 - 3000	0 - 40	12
THS 4500	225 - 4500	0 - 45	17

PLEASE NOTE: Please contact our sales team for full technical drawings if required.

*Per clamp. **Weight per clamp without chains.

TAG/TWG 'WIDE JAW' UNIVERSAL CLAMPS



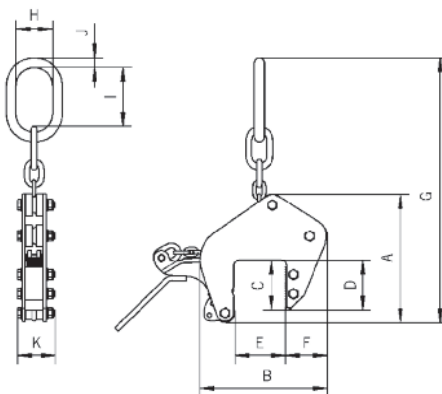
TAG 750/100

The TAG universal clamps are extremely versatile. They have a large jaw capacity that enables them to be used on a multitude of applications such as loading machine tools, steel constructions, welding and numerous assembly duties. The design means that they do not require additional chain slings and are very easy and simple to use.

The automatic gripping force is retained by a positive tension jaw spring, even if there is slack in the chain. The clamps are also fitted with a 'Quick-Open' lever for ease of loading and unloading.

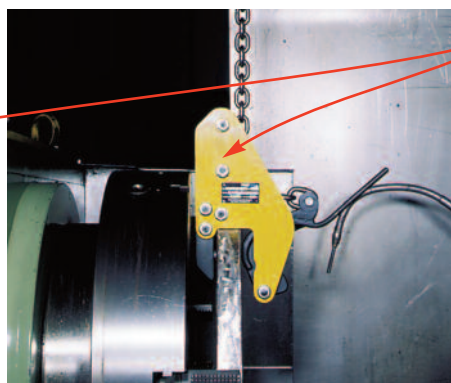
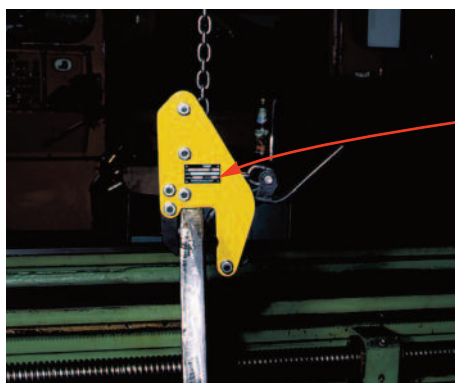
These clamps are service-friendly, making it easy to exchange parts, which are readily available. Clamp repairs are available through the factory, or can be done by a competent person.

Protective lined jaws can be fitted up to 1250kgs WLL. Call our sales team for prices and availability.



Model	WLL kgs*	Jaw capacity mm	A mm	B mm	C mm	D mm	E mm	F mm	G mm	H mm	I mm	J mm	K mm	Weight kgs*
TAG 350/100	35 - 350	0 - 100	264	259	128	100	100	85	550	75	121	20	78	9
TAG 350/200	35 - 350	90 - 200	382	434	195	156	200	120	760	75	121	20	90	14
TAG 750/100	75 - 750	0 - 100	264	259	128	100	100	85	550	75	121	20	83	9
TAG 750/200	75 - 750	90 - 200	382	434	195	156	200	120	760	75	121	20	90	15
TAG 1250/100	125 - 1250	0 - 100	320	289	128	100	100	85	570	75	121	20	83	15
TAG 1250/200	125 - 1250	90 - 200	382	434	195	156	200	120	760	75	121	20	90	26
TAG 2000/100	200 - 2000	0 - 100	328	415	135	115	100	105	571	75	121	20	105	22
TAG 2000/200	200 - 2000	90 - 200	375	515	195	165	200	160	750	75	121	20	105	30
TAG 3000/90	360 - 3000	5 - 90	297	290	136	106	90	91	570	82	111	32	137	25
TAG 5000/90	600 - 5000	5 - 90	297	290	136	106	90	91	570	82	111	32	147	30
TAG 5000/170	600 - 5000	80 - 170	374	423	180	155	170	118	620	82	111	32	147	44
TAG 10000/100	1500 - 10000	0 - 100	405	423	160	130	100	160	720	102	144	40	208	70
TAG 10000/200	1500 - 10000	100 - 200	440	562	200	175	200	183	840	102	144	40	208	101

*Per clamp.



* Model: TWG

TWG universal grab is an variation of the TAG. It is specially designed with a small outside measurement for use on hard to reach places such as loading billets on to a lathe etc.

• Please contact our sales team for full technical specification, prices and availability on the TWG option.

LJ 'NON-MARKING' PLATE CLAMPS

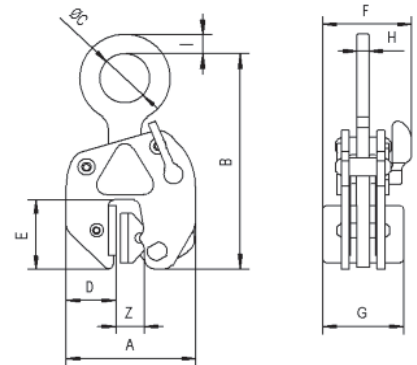


The LJ non-marking plate clamps are designed for lifting, turning and transporting of all structural steel plates, stainless steel, iron, timber and aluminium without marking, damaging or leaving indentations on the surface. It can also be used for plates with extremely hard surfaces.

As standard these clamps come with leather lined pads and jaws, however there is also the option of having rubber or plastic pads fitted for use with polished materials. Contact our sales team for details.

These plate clamps are service-friendly, making it easy to exchange parts, which are readily available. Clamp repairs are available through the factory, or can be done by a competent person.

NB: The surface of the plate must be free of oil, grease or any other liquid to ensure safe transport.



Model	WLL kgs*	Jaw capacity mm	A mm	B mm	C mm	D mm	E mm	F mm	G mm	H mm	I mm	Weight kgs**
LJ 500	25 - 500	0 - 10	127	200	55	52	69	86.5	76	13	20	3.5
LJ 1500	180 - 1500	0 - 20	215	345	85	75	135	131	118	20	24	12

*Per clamp.

**Weight per clamp without chains.

TSB NON-MARKING 'FRICTION' PLATE CLAMPS



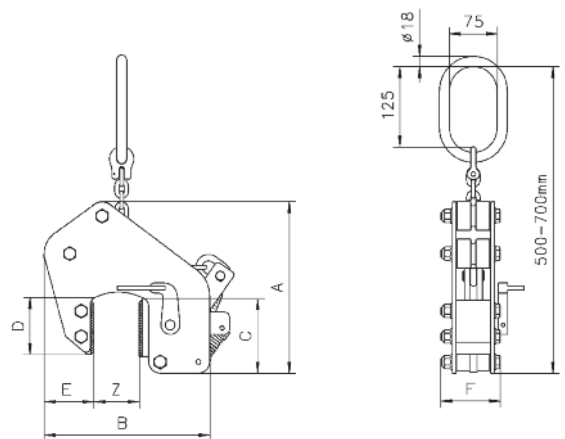
The TSB non-marking plate clamps with chain are designed for vertical lifting and transporting of plate material. This particular range of clamps has a large jaw capacity that enables it to be used on a multitude of applications.

The main feature of the TSB plate clamps is the fact that it is non-marking. It works through the process of 'friction'. This is achieved by a special material on the jaw and pad which is similar to brake linings.

Other benefits of the TSB, is that one grab can also be used for lifting materials such as concrete, wood, stone, and hardened steel.

These plate clamps are service-friendly, making it easy to exchange parts, which are readily available. Clamp repairs are available through the factory, or can be done by a competent person.

NB: The surface of the plate must be free of oil, grease or any other liquid to ensure safe transport.



Model	WLL kgs*	Jaw capacity mm	A mm	B mm	C mm	D mm	E mm	F mm	Weight kgs*
TSB 350/65	20 - 350	0 - 65	270	260	128	100	65	78	8
TSB 750/65	40 - 750	0 - 65	270	260	128	100	65	78	9
TSB 1250/65	125 - 1250	0 - 65	270	260	128	100	65	78	12

*Per clamp.

TSD 'STANDARD' SCREW CLAMPS



The TSD standard screw clamps offer many possible uses. They are designed to be used in conjunction with ratchet lever hoists to align steel structures or fabrications. They are ideally suited for the construction industry.

The unique design of the spindle makes it easy to attach to 'angle' plate. This is achieved by simply turning the handle which applies the pressure to the plate holding it securely.

NB. The plate surface of the material to be lifted must not exceed a hardness level of HRC 30/Brinell 300.



Model	WLL kgs*	Jaw capacity mm	Weight kgs*
TSD 1500	1500	0 - 35	5
TSD 3000	3000	0 - 35	8
TSD 5000	5000	0 - 40	16
TSD 7500	7500	0 - 40	19.5

**Per clamp. • Please contact our sales team for full technical drawings.*

TSZ 'TWO WAY' SCREW CLAMPS



The TSZ 'two way' screw clamps have all the same features of the TSD (shown above) but have the additional benefit of a second lifting point enabling it to pull in two different directions

NB. The plate surface of the material to be lifted must not exceed a hardness level of HRC 30/Brinell 300.



Model	WLL kgs*	Jaw capacity mm	Weight kgs*
TSZ 500	500	0 - 28	3
TSZ 1500	1500	0 - 35	5
TSZ 3000	3000	0 - 35	9
TSZ 5000	5000	0 - 40	16
TSZ 7500	7500	0 - 40	21

**Per clamp. • Please contact our sales team for full technical drawings.*

TSH 'SWIVEL HOOK' SCREW CLAMPS



The TSH 'swivel hook' screw clamps offer many possible applications. It is particularly useful for lifting, transferring and pulling sheet metal, girders and steel constructions.

The clamps are supplied complete with an alloy safety shackle, that allows for pulling in 180° degrees.

NB. The plate surface of the material to be lifted must not exceed a hardness level of HRC 30/Brinell 300.

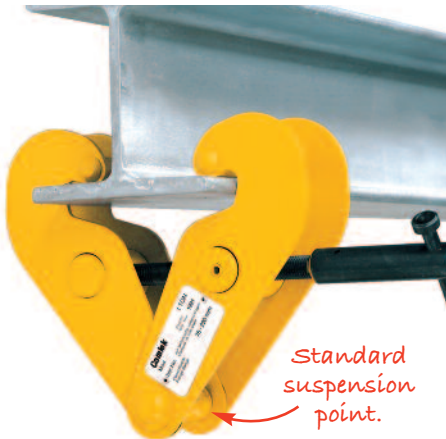


Model	WLL kgs*	Jaw capacity mm	Weight kgs*
TSH 750	750	0 - 30	3.1
TSH 1500	1500	0 - 32	7
TSH 3000	3000	0 - 50	11
TSH 5000	5000	0 - 80	27

**Per clamp. • Please contact our sales team for full technical drawings.*

SC 'STANDARD' BEAM CLAMPS

**BEST
SELLER**

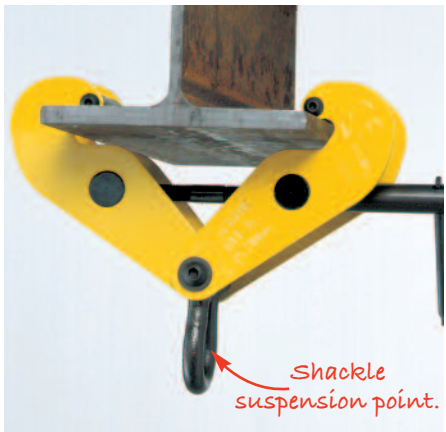


Model	Capacity (WLL) kgs	Beam width mm	Weight kgs
SC1	1000	75 - 230	3.8
SC2	2000	75 - 230	4.6
SC3	3000	80 - 320	9.2
SC5	5000	90 - 320	11.0
SC10	10000	90 - 320	17.2

The SC beam clamp provides a quick and versatile rigging point for hoisting equipment, pulley blocks or loads and comes complete with a locking device. The unit offers flexible applications, due to the wide adjustment range. The central threaded spindle allows easy attachment and a safe and secure grip to the beam flange.

NB. THIS MODEL MUST NOT BE USED FOR LIFTING.

SC92 BEAM CLAMPS WITH SHACKLE



Model	Capacity (WLL) kgs	Beam width mm	Weight kgs
SC92-1	1000	75 - 210	5.0
SC92-2	2000	75 - 210	6.0
SC92-3	3000	100 - 270	8.0
SC92-5	5000	100 - 270	12.0
SC92-10	10000	75 - 305	19.0

The SC92 beam clamp provides a quick and versatile rigging point for hoisting equipment, pulley blocks or loads. The unit offers flexible applications, due to the wide adjustment range. The central threaded spindle allows easy attachment and a safe and secure grip to the beam flange.

NB. THIS MODEL MUST NOT BE USED FOR LIFTING.

YRC 'REINFORCED' BEAM CLAMPS



Reinforced beam clamps Capacities: 1000 - 10000kgs

Camlok have now designed a brand new range of reinforced beam clamps. The YRC clamps have all the standard features associated with the SC range of clamps but have the added benefit of being extremely tough and robust, due to the reinforced side plates and jaws. This design change makes them a very safe attachment point, even under demanding conditions.

NB. THIS MODEL MUST NOT BE USED FOR LIFTING.



Comparison: YRC (left)
with standard SC (right)

Model	Capacity (WLL) kgs	Beam width mm	Weight kgs
YRC-1	1000	75 - 230	4.8
YRC-2	2000	75 - 230	6.2
YRC-3	3000	80 - 320	12.6
YRC-5	5000	90 - 320	14.3
YRC-10	10000	90 - 320	24.0

SCS 'SWIVEL JAW' BEAM CLAMPS

The **SCS screwlok beam clamps** have been specifically designed for use as a semi-permanent anchor point. This range is fitted with swivel jaws that give a more positive grip to the beam flange. These clamps are fitted with a shackle suspension point and are very quick and easy to attach to the beam by simply turning the threaded middle bar.

Model	WLL kgs*	Jaw capacity mm	Weight kgs*
SCS 2	2000	80 - 305	8
SCS 3	3000	80 - 305	10
SCS 5	5000	80 - 305	14
SCS 10	10000	80 - 305	20

***Per clamp.** • Please contact our sales team for full technical drawings.

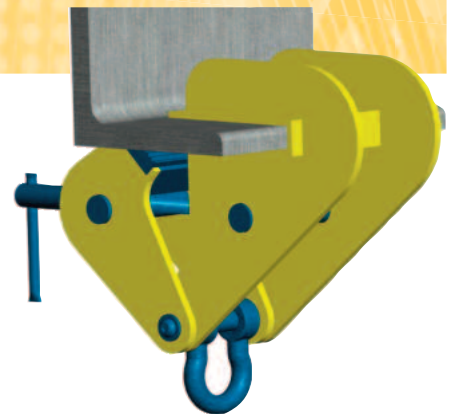


SCA 'ANGLE CLAMP' BEAM CLAMPS

The **SCA screwlok beam clamps** offer many of the same features as our other beam clamps however this range is specifically designed to be attached to rolled steel angle. These are normally found against the wall of a roof.

Model	WLL kgs*	Jaw capacity mm	Weight kgs*
SCA 500	500	40 - 100	4
SCA 1000	1000	40 - 100	6
SCA 2000	2000	50 - 160	10.5
SCA 3000	3000	100 - 210	19

***Per clamp.** • Please contact our sales team for full technical drawings.

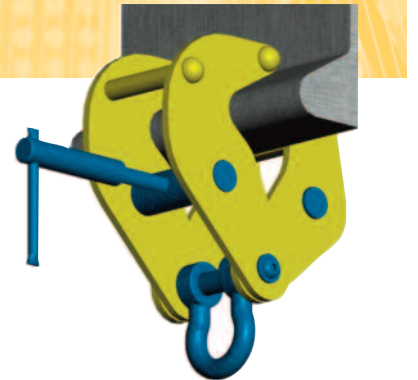


SCB BULB BAR CLAMPS

The **SCB bulb bar clamp** is a variant of Camlok's SCA clamp and is particularly useful in the ship building industry. The clamp has a large bow shackle for quick and easy attachment of hoist slings etc. Also available with load bar for low headroom.

Model	WLL kgs*	Max bulb mm	Weight kgs*
SCB1	1000	60	4
SCB3	3000	83	12

***Per clamp.** • Please contact our sales team for full technical drawings.



BA BULB BAR ANCHORS

The **BA bulb bar anchor** has been designed for attachment to bulb profiles, often found in ship compartments and engine rooms, to provide a semi-permanent lifting point. The clamp can be quickly and easily attached via the screw type mechanism. The fabricated light weight design ensures a firm grip onto the bulb section. The unique large bow hook ring gives easy connection for all types of lifting machines.

Model	WLL kgs*	Bulb size HP	Weight kgs*
BA0.75	750	80 - 160	3
BA1.5	1500	160 - 240	4
BA3.0	3000	240 - 320	5.5
BA6.0	6000	320 - 430	12.5

***Per clamp.** • Please contact our sales team for full technical drawings.



CB BULB SECTION LIFTING CLAMPS



Bulb section clamps

Working load limit (WLL) 750 - 3000kgs

The CB bulb section clamps are to be used when lifting, transporting and turning bulb section plate or fabrications containing bulb section plate up to a surface hardness of HRC 30/Brinell 300.

They attach to the plate from the bulb side and once offered up to the sections they are locked in place by the jaw locking lever.

The design allows the clamp to be used individually, however for longer sections they should be used in pairs in conjunction with a spreader beam.



Model	WLL kgs*	Bulb thickness mm	Weight kgs*
CB 750	75 - 750	40	6
CB 1500	150 - 1500	60	12
CB 3000	300 - 3000	83	31

**Per clamp. • Please contact our sales team for full technical drawings.*

TTT HORIZONTAL GIRDER CLAMPS (SPLIT TOE PLATE)



Horizontal girder clamp

(WLL) 750 - 4500kgs

The TTT horizontal girder clamps have been designed to be used in pairs and can be used on girders up to a surface hardness of HRC 30/Brinell 300.

The unique design of the split toe allows long sections of girders to be lifted without the use of a spreader beam. This is achieved by using a pair of clamps with a 2-legged chain sling.

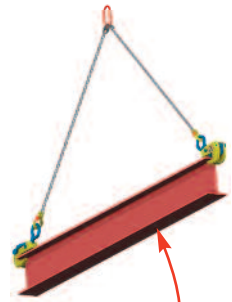
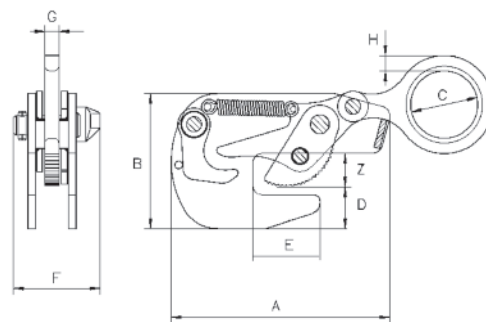


Illustration of use with two clamps and a 2-legged chain sling.



Model	WLL kgs*	Jaw capacity mm	A mm	B mm	C mm	D mm	E mm	F mm	G mm	H mm	Weight kgs*
TTT 0.75	750	0 - 20	225	142	70	45	70	106	16	16	3
TTT 1.5	1500	0 - 35	225	180	80	56	70	120	19	20	6
TTT 3.0	3000	0 - 40	225	195	84	60	75	125	19	25	10
TTT 4.5	4500	0 - 45	225	222	105	65	90	147	22	30	16

**Per clamp.*

CG 'STANDARD' GIRDER TURNING CLAMPS

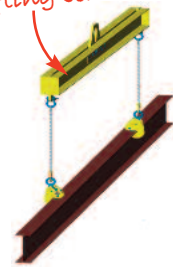


The main purpose of the **CG girder turning clamps** is for the transportation and turning of steel girders (RSJ) through 90° degrees.

They can be used individually or for longer beams used in pairs in conjunction with a spreader beam as shown in diagram.

The clamps are attached to the horizontal flange of the girder and locked in place by the jaw locking lever. Once lifted the girder will turn through 90° degrees.

For longer girders use two clamps and a lifting beam.



Model	WLL kgs*	Jaw capacity mm	Weight kgs*
CG 1	100 - 1000	0 - 16	6
CG 2	200 - 2000	0 - 32	14
CG 4	400 - 4000	0 - 32	19
CG 6	600 - 6000	12 - 50	37
CG 8	800 - 8000	12 - 50	40

*Per clamp. • Please contact our sales team for full technical drawings.

TTR 'VERTICAL FLANGE' GIRDER STACKING CLAMPS



The main selling point of the **TTR girder stacking clamps** is the fact that it enables girders to be transported and stacked horizontally. These are ideal for use within steel stockholders. Once offered up to the **vertical** flange of the girder, they are locked in place by the jaw locking lever.

The design allows the Clamp to be used individually, however for longer girders they should be used in pairs in conjunction with a spreader beam.



Model	WLL kgs*	Jaw capacity mm	Weight kgs*
TTR 750	40 - 750	5 - 16	3.5
TTR 1500	150 - 1500	5 - 25	10
TTR 3000	300 - 3000	5 - 28	12

*Per clamp. • Please contact our sales team for full technical drawings.

TTG 'HORIZONTAL FLANGE' GIRDER STACKING CLAMPS



The **TTG girder clamps** are designed for transporting girders in the 'I' configuration / position (see photograph on the right).

These are ideal for use within steel stockholders. Once offered up to the **horizontal** flange of the girder they are locked in place by the jaw locking lever.

The design allows the clamp to be used individually, however for longer girders they should be used in pairs in conjunction with a spreader beam.



Model	WLL kgs*	Jaw capacity mm	Weight kgs*
TTG 500	25 - 500	0 - 20	3
TTG 1500	75 - 1500	0 - 30	5.5
TTG 3000	150 - 3000	0 - 35	11
TTG 4500	450 - 4500	0 - 40	14.5
TTG 7500	750 - 7500	0 - 45	28

*Per clamp. • Please contact our sales team for full technical drawings.

CR SINGLE RAIL CLAMPS

The **CR rail clamps** are designed to lift single rails securely and safely. The clamp is designed to fit most types of rail section sizes currently in use. The clamp has a narrow profile to enable attachment to an individual rail that is stacked side by side with other rails. The clamp is locked onto the rail-head via a lever operated spring mechanism. It is recommended to use clamps suspended from a lifting beam for long rail lengths.

Clamps can be supplied with a short length of chain and lifting eye as shown in the illustration. This **MUST** be specified at the time of order.



**Typical application shot showing a CR1000 in use with a D85 Pul-lift an 'Iron man'.*



Model	Number of rails	WLL kgs	Weight kgs
CR1000	1	1000	13
CR2000	1	2000	13

RP RAIL PULLING CLAMPS

The **RP rail pulling clamps** are designed to be used when positioning lengths of rail. They have been designed to fit most standard rail currently in use. To pull your length of rail you simply place the clamp over the head of the rail, at the end, and tighten the threaded bar (by hand) until it is clamped on to the rail web.

Once clamped to the rail you are ready to use by attaching the hook of your chain directly on to the shackle at the top of the clamp and begin pulling.

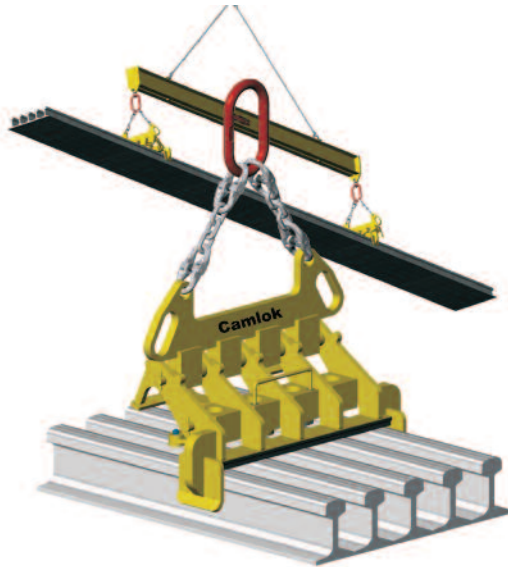
To release, simply unscrew the threaded bar and lift clamp from the rail.

The units shown are the industry standard. Other sizes are available upon request. Please contact our engineering team for details.



Model	Number of rails	WLL kgs	Weight kgs
RP1.5	1	1500	6
RP3.0	1	3000	8
RP5.0	1	5000	13

MR 'FIXED' MULTI RAIL GRABS



The MR Multi-rail grabs have been designed to facilitate the fast bulk handling of a *specific* rail section (details to be advised at time of order).

Rails are locked onto the clamp by swivelling feet that locate under the rail-head and top clamp body that rotates in a cam action pressing a hard rubber lined horizontal beam onto the top of the rail-head. The rubber lined contact beam prevents marking or damage to the rail-head.

Two clamps are recommended at centres of 50% to 60% of rail length for rails up to 20 mtr long. For rails longer than 20mtr, three clamps at centre distance between outer clamps of 65% to 75% of rail length must be used. (NB. Clamp must be within rated WLL).

Rails to be lifted must be stacked with bottom flange toes touching. All rails must be of the same rail section size.

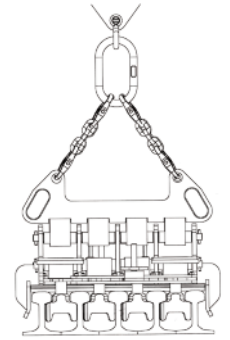
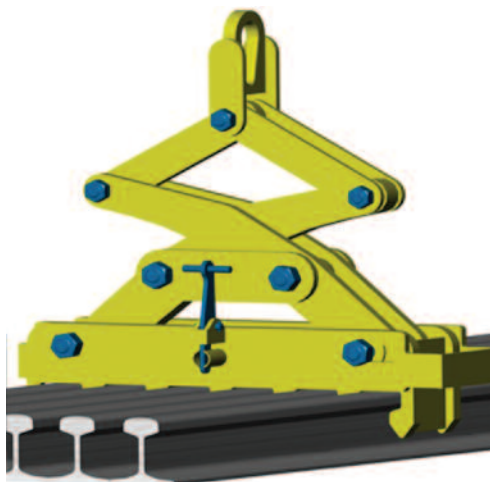


Illustration of MR Multi-rail configuration.

Model	Number of rails	WLL kgs	Weight kgs
MR3	3	5000	84
MR4	4	5000	108
MR5	5	5000	132
MR6	6	6000	156
MR7	7	7000	180
MR8	8	8000	204
MR10	10	10000	252
MR12	12	12000	300

• Please advise rail section when ordering.

MRC 'INTERCHANGEABLE' MULTI RAIL GRABS



The MRC Multi-rail grabs have been designed to facilitate the fast bulk handling of ALL rail sections.

The features and applications of the MRC Multi-rail grabs are similar to that of the MR Multi-rail clamps but with the added benefit of having interchangeable, modular designed comb sections. Various combs sections to suit specific rails can be combined with the same scissor mechanism. Alternative comb sections are to be purchased separately. Please contact our sales team for further details.

An additional feature of the MRC is that it can be fitted with an automatic open / close device that automatically engages the rail sections when the clamp is lifted from the rest position on top of the rails.

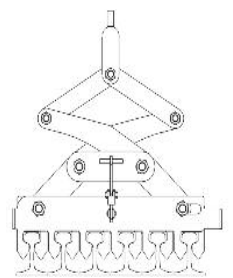


Illustration of MRC Multi-rail configuration.

Model	Number of rails	WLL kgs	Weight kgs
MRC4	4	5000	200
MRC5	5	5000	230
MRC6	6	6000	265
MRC7	7	7000	295
MRC8	8	8000	330

• Please advise rail section when ordering.

• For optional automatic open/close device please contact the Camlok sales team.

TPM PERMANENT LIFTING MAGNETS

TPM permanent lifting magnets are ideal tools for easy, quick and economical transport of heavy objects made from ferro-magnetic material. Typical operating areas are workshops and warehouses, loading and unloading of machines as well as construction of jigs and fixtures.

Factors that reduce the magnetic clamping force:-

Air gap: High magnetic forces created by the TPM allow the magnet to clamp components through the air gap, however, air gaps will reduce the magnetic performance as they provide a barrier between the contact surfaces. Air gaps occur in a number of different ways such as paint, dust and heavy mill scale. Poorly machined surfaces also constitute an air gap. Please down rate the magnet capacity in accordance with the adhesive force/air gap diagram below.

Material thickness: If the TPM is used to lift plates thinner than the recommended minimum thickness, the clamping forces will be significantly reduced. Performance curves can be identified in conjunction with the adhesive force/flat thickness diagram below:

Contact area: Full lifting capacity can only be achieved when the magnet has full contact area with the component being lifted. If the contact surface has holes in or is uneven then the performance will be affected accordingly. Always carry out a trial lift in these circumstances to establish correct lifting before transporting the load.

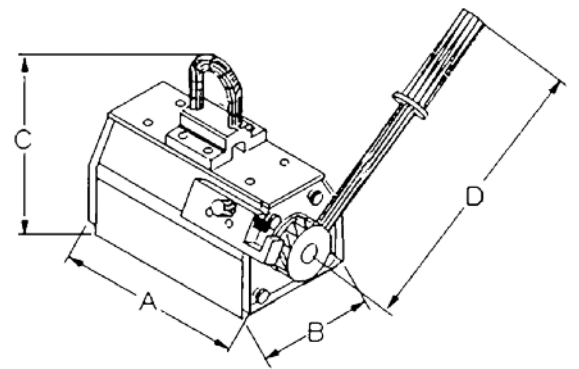
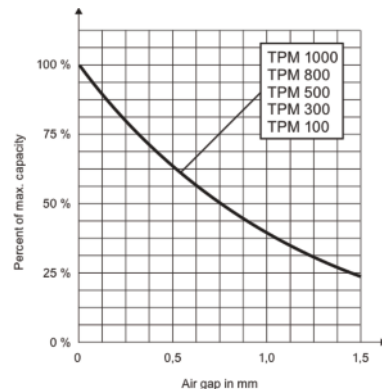
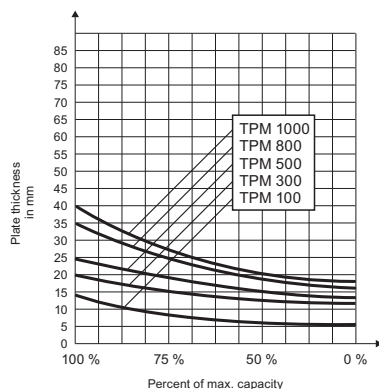
Material type: Certain materials have different abilities to carry magnetism. For materials other than mild steel a reduction factor must be applied in order to calculate the effective clamping force.

Typical values:

Ferrous alloy steels 0.8
High carbon steels 0.7
Cast iron 0.55

Examples of reduced SWL:

Mild steel 500g
Cast iron 500kg x 0.55 = 275kgs



Model	Flat material			Round material			Tear off force kgs	Dimensions				Weight kgs
	Maximum capacity SWL kgs**	Minimum thickness to obtain max. SWL mm**	Maximum length of material mm	Maximum capacity SWL kgs**	Diameter mm	Maximum length of material mm		A mm	B mm	C mm	D mm	
TPM 1	100	15	2000	50	200-300	2000	300	122	69	185	160	6
TPM 3	300	19	2500	150	200-300	2500	900	192	95	225	250	15.5
TPM 5	500	25	3000	250	200-300	3000	1500	232	120	270	250	29.5
TPM 8	800	35	3500	400	200-300	3500	2400	302	154	320	450	53
TPM 10	1000	40	3500	500	200-300	3500	3000	332	154	320	450	60

****Maximum lifting capacity is achieved by using mild steels with the noted minimum thickness.
Mild steel st37 - Fe 360 to BS EN 10 025 1990 (DIN 17100).**

THM MAGNETIC CLAWS

*** MANUAL HANDLING**

The **THM manual magnetic claws** are used for manually transporting steel sheets horizontally and vertically. They can also be used for lifting plates from racks, pulling sheets out of shelving and transporting almost any steel plates that are magnetic.

These claws are capable of carrying plate with a thickness of 1 - 5 mm and are totally maintenance free.

They operate by simply placing the claw on to the material. To release the claw the operator must press down on the handle which activates a cam that releases the magnet.

NB: The surface of the plate must be free of oil, grease or any other liquid to ensure safe transport.



Model	Lifting capacity kgs*	Pulling capacity kgs	Width mm	Length mm	Height mm	Weight kgs
THM 120	120	70	84	140	172	1.2
THM 170	170	100	116	140	172	1.7

**Measured at a safety factor 2 : 1 on bright drawn material St 37 k.*

TPZ BOARD CLAMPS

*** MANUAL HANDLING**



TPZ board clamps offer a simple and effective way to vertically lift and transport a variety of materials such as wood, MDF, plasterboard, stone, and plastics. They can also be used to lift loads from the horizontal to the vertical through 90° for transportation. The range has been designed to be user friendly and the handle enables the operator to guide the load easily during operation and each clamp is supplied fitted with large rubber pads to minimise damage.

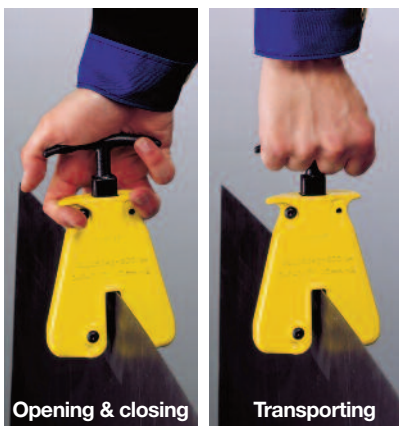
These clamps are ideal in production facilities and especially on construction and building sites.

Model	WLL kgs*	Jaw capacity mm	Weight kgs*
TPZ 400	20 - 400	5 - 55	8
TPZ 400L	20 - 400	50 - 100	9
TPZ 750	40 - 750	5 - 60	12
TPZ 750L	40 - 750	60 - 120	14
TPZ 1500	75 - 1500	5 - 75	13
TPZ 1500L	75 - 1500	75 - 150	15

**Per clamp. • Please contact our sales team for full technical drawings.*

HGC HAND GRIP CLAMPS

*** MANUAL HANDLING**



The **HGC hand grip clamps** are suited for the individual transport of light and thin plates. They have a jaw capacity of up to 10 mm and can lift up to 250kgs.

To operate the clamp you simply press down on the hand grip which compresses a spring. This allows the clamp to open and slide onto the plate. The plate can then be lifted and transported using the ergonomically designed hand grip. The positive spring pressure prevents the plate from accidentally slipping out of the clamp.

NB. Plate surface of material lifted must not exceed a hardness level of HRC 30/Brinell 300.

Model	WLL kgs*	Jaw capacity mm	Weight kgs*
HGC 250	250	0 - 10	1.4
HGC 250 (Ext. handle)	250	0 - 10	1.5
HGC 250 (Eye bolt)	250	0 - 10	1.4

**Per clamp. • Please contact our sales team for full technical drawings.*

BTG CONCRETE PIPE LIFTING CLAMPS



* Lifting clamps for concrete pipe up to a diameter of 3000mm are available upon request.

Concrete pipe lifting clamps

Working load limit (WLL) 1500 - 3000kgs*

The BTG concrete pipe lifting clamps are sold in sets of three and they come complete with chain slings (the working load limits shown are based on a set of three clamps).

They are designed for the vertical transportation of concrete pipe sections with a diameter of up to 2000mm.

The jaw capacity is designed for pipe thickness of 40 - 220mm.

Attachment and removal of the clamps from the pipes is extremely easy due to the simple and straightforward design.

Features:

- Solid construction.
- Factor of safety 4 : 1
- Simple and safe handling.
- Large jaw capacity.
- For heavy duty use.
- Lightweight design.
- Service friendly.
- For concrete according to DIN4034.

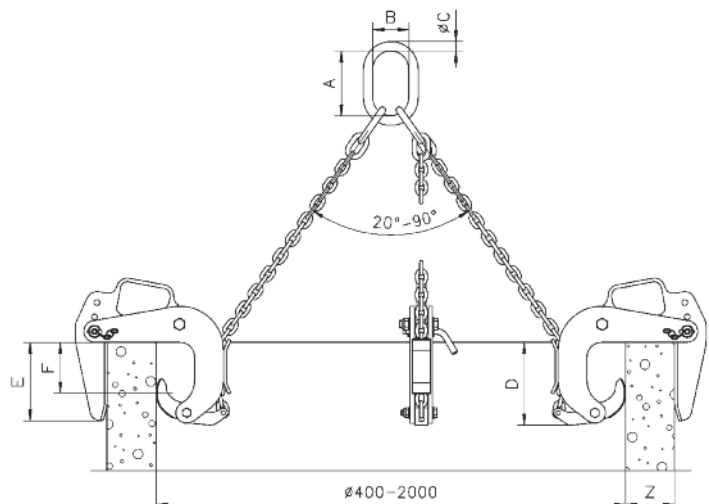
Workmanship and parts

These plate clamps are service-friendly, making it easy to exchange parts, which are readily available. Clamp repairs are available through the factory, or can be done by a competent person.

Model	WLL kgs*	Jaw (Z) capacity mm	Mouth depth (E) mm	Pressure line (F) mm	A mm	B mm	C mm	D mm	Weight kgs**
BTG1500/3	1500	40 - 120	165	100	135	75	18	180	34
BTG3000/3	3000	50 - 180	245	175	180	100	26	310	60
BTG3000L/3	3000	90 - 220	245	175	180	100	26	310	78

*Per set of three.

**Weight per set of three c/w chains.



PP PILE PULLING CLAMPS



The PP pile pulling clamps are designed to pull out driven piles or trench shielding. The clamps have a narrow opening and a deep slot to ensure that the pile is gripped firmly. It is extremely difficult to determine the forces required to pull out driven piles so it is recommended that a load indicator is used to ensure the WLL of the clamp is not exceeded.

The PP clamp is supplied as standard with a double locking mechanism to ensure that the clamp remains 'locked on' and does not become unlocked during extraction of the pile.

Model	WLL kgs	Jaw capacity mm	Throat depth mm	Weight kgs
PP 3	3000	0 - 16	147	12
PP 8	8000	0 - 30	194	28
PP 12	12000	0 - 30	190	52

CP PILE PITCHING CLAMPS



The CP pile pitching clamps are specifically designed for pitching sheet steel piling. These clamps come fitted with a 15 metre length of rope which allows the clamp to be release from the ground. These units also come fitted as standard with a shackle.

NB: These clamps are NOT designed for extracting driven piles.

Model	WLL kgs	Jaw width mm	Throat depth mm	Pin dia. mm	Weight kgs
CP 2	2000	20	228	20	19
CP 3	3000	26	228	30	23
CP 5	5000	35	228	30	33

PH PIPE HOOKS



The PH pipe hooks are used in pairs for the safe transport of pipes. The shackles are included with the hooks.

Hooks with a plastic protective cover are also available, upon request, for use on pipes with sensitive surfaces.

PH for 60° - 90° top angle between chains:

Model	WLL kgs*	Pipe wall thickness mm	Weight kgs*
PH 2/A	2000	0 - 40	2.4
PH 4/A	4000	0 - 50	5.6
PH 6/A	6000	0 - 60	8.3
PH 8/A	8000	0 - 70	13.5
PH 10/A	10000	0 - 80	17.8

PH for 90° - 120° top angle between chains:

Model	WLL kgs*	Pipe wall thickness mm	Weight kgs*
PH 2/B	2000	0 - 30	2.4
PH 4/B	4000	10 - 40	5.6
PH 6/B	6000	20 - 50	8.3
PH 8/B	8000	30 - 65	13.5
PH 10/B	10000	30 - 75	17.8

*Per pair.

TKG-VH 'MANUAL' BALANCE CRANE FORKS

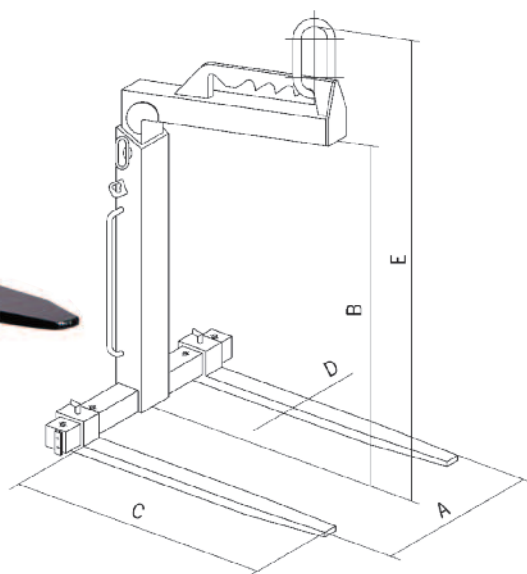


Crane forks - MANUAL

with adjustable tines, adjustable height and manual balancing system

These TKG-VH crane forks are equipped with adjustable tines and adjustable height. The balancing system engages when the shackle is manually hooked into the appropriate notch.

- All crane forks comply to all current European Quality Standards.
- Factor of safety 4 : 1
- Maintenance free.
- Highly visible safety colour.
- For the transport of rings or coils, the fork tines are simply pushed together.
- Easily adjustable tines for all pallet sizes.
- Supplied with chain for securing the load.



Model	WLL kgs	Adjustment of tines (A) mm	Useable height (B) mm	Length of tines (C) mm	Section of tines (D) mm	Overall height (E) mm	Weight kgs
TKG1.0vh	0 - 1000	350 - 900	1100 - 1600	1000	100 x 30	1390 - 1890	130
TKG2.0vh	0 - 2000	400 - 900	1300 - 2000	1000	120 x 40	1640 - 2340	200
TKG3.0vh	0 - 3000	450 - 900	1300 - 2000	1000	120 x 50	1670 - 2370	250
TKG5.0vh	0 - 5000	500 - 1000	1300 - 2000	1000	150 x 60	1700 - 2400	370

TKG-VHS 'SELF WEIGHT' BALANCE CRANE FORKS

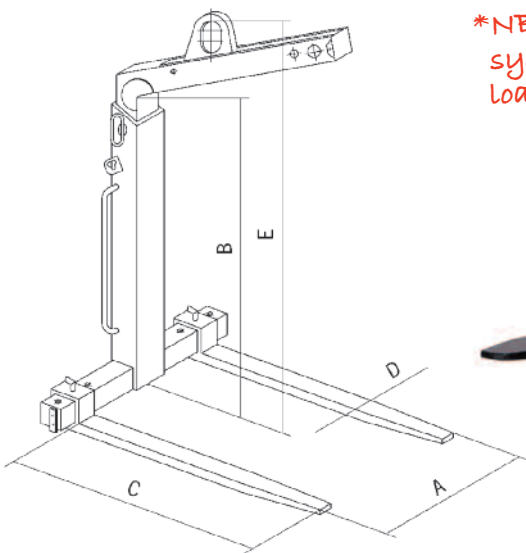
Crane forks - AUTOMATIC

with adjustable tines, height adjustability and self weight balancing forks

These TKG-VHS crane forks are equipped with adjustable tines, height adjustability & an automatic balancing system. Crane forks with automatic balancing* tend to point their tines upward when being transported. This prevents the load from unintentionally slipping off the tines.

Once the forks have picked up the load, the shackle automatically moves to one of the two selectable lifting points, suitable for loads of 800mm or 1000mm width. When the load is placed down the integral gas spring returns the shackle to the balanced position without having to place the fork down on the ground.

- All crane forks comply to all current European Quality Standards.
- Factor of safety 4 : 1
- Maintenance free.
- Highly visible safety colour.
- For the transport of rings or coils, the fork tines are simply pushed together.
- Easily adjustable tines for all pallet sizes.
- Supplied with chain for securing the load.

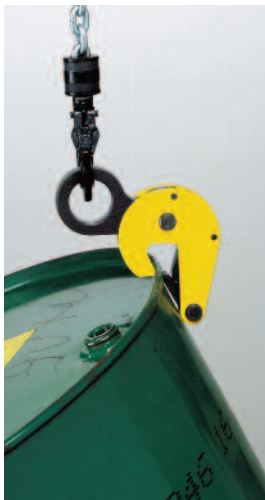


**NB: The automatic balancing system requires a minimum load of 20% of the crane forks working load limit.*



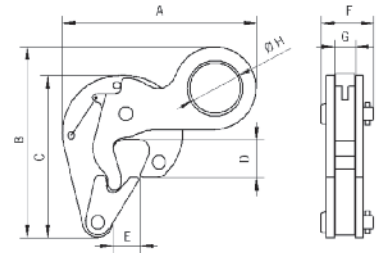
Model	WLL* kgs	Adjustment of tines (A) mm	Useable height (B) mm	Length of tines (C) mm	Section of tines (D) mm	Overall height (E) mm	Weight kgs
TKG1.0vhs	*200 - 1000	350 - 900	1100 - 1600	1000	100 x 30	1420 - 1920	140
TKG2.0vhs	*400 - 2000	400 - 900	1300 - 2000	1000	120 x 40	1655 - 2355	220
TKG3.0vhs	*600 - 3000	450 - 900	1300 - 2000	1000	120 x 50	1720 - 2420	280
TKG5.0vhs	*1000 - 5000	500 - 1000	1300 - 2000	1000	150 x 60	1710 - 2410	380

DC500 DRUM CLAMP



The **DC500 drum clamp** has been designed to lift and transport steel drums. If moving empty or sealed drums then one clamp is sufficient on its own. Should you be lifting an open full drum, then two clamps should be used with a two leg chain sling.

This clamp is extremely light weight and very quick and easy to use.



Model	WLL kgs*	A mm	B mm	C mm	D mm	E mm	F mm	G mm	H mm	Weight kgs*
DC500	500	152	150	127	30	21	41	17	40	1.2

*Per clamp.

DCV500 'VERTICAL LIFT' DRUM CLAMP

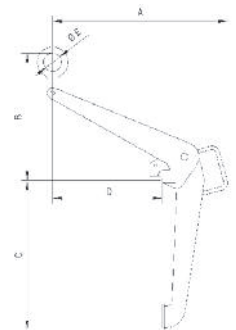


The **DCV500 drum clamp** has been designed to lift and transport steel drums in the vertical position. One clamp can be used to lift drums with or without their lids by gripping the rim of the drum.

Its light weight and small overall design makes it ideal for picking up drums that sit tightly on pallets.

The centre of gravity of the drum is below the lifting point during transportation.

The DVC500 is also available with a 'lock on / open latch'. Please contact the Camlok sales team for further details.



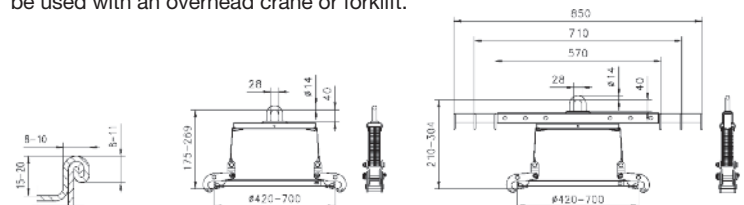
Model	WLL kgs	A mm	B mm	C mm	D mm	E mm	Weight kgs
DCV500	500	479	350	410	300	50	7

DA/DAF 'LOW HEADROOM' DRUM GRABS



The **DA drum grab** is designed for the vertical transportation of steel drums. The jaws grab under the lip of the drum with its form-fitting connection.

The **DAF drum grab** works on the same principle as the DA grab, but has the added benefit of adjustable arms that can be used with an overhead crane or forklift.



Model	WLL kgs	Jaw Capacity mm	Weight kgs
DA	350	420 - 700	3.5
DAF	350	420 - 700	6.0

DT 'HORIZONTAL LIFTING' DRUM TONGS



The **DT drum tongs** have been designed for use when lifting and transporting drums in the horizontal position.

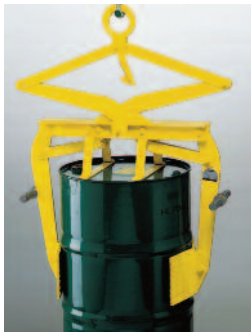
To use these tongs you simply attach the jaws below the rolled edge on either end of the drum and lift the handle upwards. The drum is then ready to lift. The weight of the drum on the tong jaws prevents the jaws from opening.

To release the tongs simply place the drum on the ground and push downward on the lever.

NB: These tongs are designed for use with STEEL DRUMS only.

Model	WLL kgs	Drum length mm	Weight kgs
DT	500	600 - 900	5.5

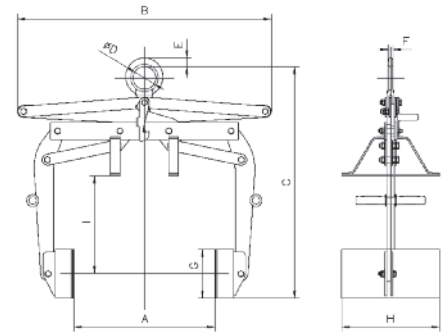
DBV500 DRUM GRAB



The **DBV500 drum grab** has been designed for the transportation of upright barrels.

This unit grabs upright barrels and sets them down in the same position. The clamping jaws are fitted with a hard rubber lining to provide a friction hold. There is a form-locking feature on the drum hoop that provides extra safety. This additional feature is indispensable if the surface of the barrels is stained with oil or grease.

NB: These grabs are designed for use with STEEL DRUMS only.



Model	WLL kgs	Jaw Capacity Ø mm	A mm	B mm	C mm	D mm	E mm	F mm	G mm	H mm	I mm	Weight kgs
DBV	300	400 - 600	600	1040	950	90	34	15	200	400	400	65

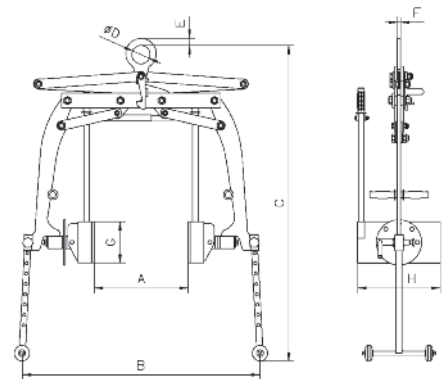
DBT DRUM GRAB



The **DBT drum grab with tipping device** has been designed for the transportation, lifting, placing down, turning over and emptying of barrels.

In order to tip the drums easily, the must be picked up at the correct centre of gravity.

NB: These grabs are designed for use with STEEL DRUMS only.



Model	WLL kgs	Jaw Capacity Ø mm	A mm	B mm	C mm	D mm	E mm	F mm	G mm	H mm	Weight kgs
DBT	300	400 - 600	600	1150	1525	90	34	15	200	400	83

TRU ROUND STOCK GRABS



TRU round stock grabs

Working load limit (WLL) 100 - 4000kgs

The **TRU round stock grabs** are designed to pick up tubes, pipes and rolls or similar round stock material with a diameter of up to 600mm. They are extremely easy and simple to use and make for safe lifting.

Options:

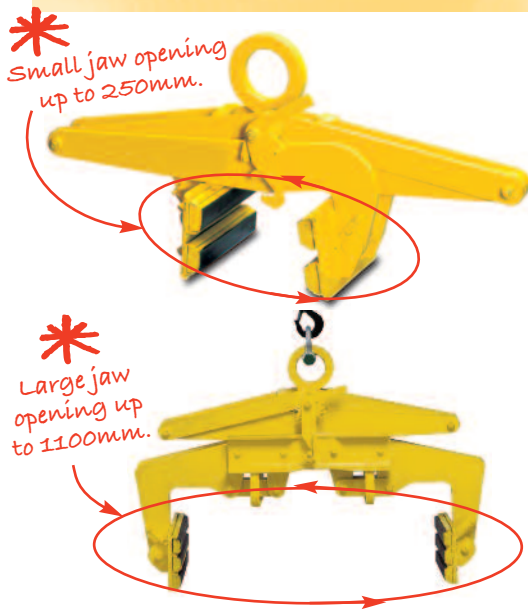
- Available with automatic open / close device.
- Jaws can be fitted with plastic or rubber pads to minimise marking of surfaces.

NB: When using the protective lining, it is important that the surfaces are dry, clean and free of oil and grease.



Model	WLL kgs	Jaw capacity mm	Weight kgs
TRU 100	100	50 - 150	3.9
TRU 500	500	35 - 200	13.6
TRU 1000	1000	35 - 200	13.6
TRU 1500	1500	80 - 300	27.0
TRU 3000	3000	80 - 300	49.0
TRU 4000	4000	200 - 600	204.0

TBG BLOCK GRABS



TBG block grabs

Working load limit (WLL) 200 - 1000kgs

The **TBG block grabs** are designed to transport all materials with parallel surfaces that can withstand a clamping pressure twice as high as the load being lifted. The range offers jaw capacities from 0 - 1100mm. They are extremely easy and simple to use and make for safe lifting.

Options:

- Available with automatic open / close device.
- Jaws can be fitted with serrated teeth or rubber lined pads. Please specify at time of ordering.

NB: When using the models fitted with rubber pads, it is important that the surfaces are dry, clean and free of oil and grease.



Model	WLL kgs	Jaw capacity mm	Weight kgs
TBG 500S (T/R)	500	0 - 150	27
TBG 1000S (T/R)	1000	50 - 250	50
TBG 200L (T/R)	200	200 - 500	49
TBG 300L (T/R)	300	400 - 700	52
TBG 500L (T/R)	500	600 - 900	55
TBG 1000L (T/R)	1000	800 - 1100	72

T= Supplied with teeth. R= Supplied with rubber.

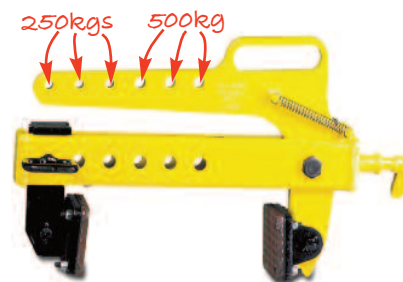
TSA 'LIGHT WEIGHT' BLOCK GRAB



Block grab model TSA Capacities 250/500kgs

The TSA block grab is useful for the transport of stone and concrete blocks and other materials with parallel surfaces. The grab has a protective lining to ensure a safe and non-marking transport.

The clamping jaw and the centre of gravity are easily and quickly adjustable by means of the locking pin.



Model	WLL kgs	Jaw capacity mm	Weight kgs
TSA 500	250/500	0 - 240	13.5

NB: It is important that the surfaces are dry, clean and free of oil and grease.

TDI INSIDE COIL GRABS



The TDI inside grabs are specifically designed for the handling of cylindrical or rectangular objects such as coils or box section.

These grabs are available with three different jaw options dependant on your application. The jaw options available are: Profiled steel, case hardened serrated, or rubber protective lined.

For inside grabs with jaws with protective lining, the inside surface of the material being lifted must be free of oil and grease. When ordering please advise the jaw lining required.

* Model shown has profiled steel jaws.



Model	WLL kgs	Inside diameter mm	Weight kgs
TDI 100	100	220 - 420	17
TDI 500	500	400 - 600	53
TDI 1000	1000	500 - 700	60

TPR 'LIGHT WEIGHT' PROFILE STEEL GRABS



The TPR profile steel grabs are specifically designed for the handling and transportation of steel girders in the 'I' configuration.

They boast a large jaw capacity, which makes them useful for various beam widths.

The clamping jaws press securely with a positive fit to the girder.



Model	WLL kgs	Inside diameter mm	Weight kgs
TPR 500	500	0 - 200	15
TPR 1500	1500	0 - 300	24
TPR 3000	3000	0 - 300	47

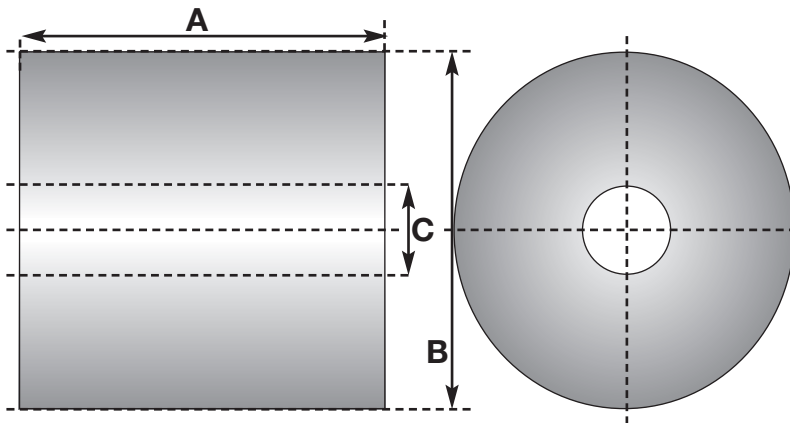
TCK 'SINGLE ARM' C-HOOKS

Single-arm, C-Hooks

The Camlok TCK C-Hooks have been designed to safely and efficiently handle coils, rolls, rings, pipes, round stock and other similar loads.

Camlok uses the latest 3D CAD Design technology to quickly produce specific products tailored to our customers requirements. There are many additional options available including shaped tines and adjustable end-stops.

Load details: The more information you can provide the quicker a quote can be prepared. Please provide the Width (A) x Outside Dia. (B) x Inside Dia. (C)



TACH 'TWIN-ARM' C-HOOKS

Twin-arm, C-Hooks for confined spaces

The Camlok TACH Twin-arm, C-Hooks are designed to lift loads in the horizontal position and are ideal for narrow-isle handling applications.

The hooks are suspended from notches on the top beam. These allow the arms to be adjusted to suit a variety of load widths. This hook can be engaged and released by a single crane operator.

All TACH C-hooks are individually designed to your specific requirements. Please call our engineering department with your measurements and we will do the rest.

***** Please provide the same information as shown in the diagram above on the TCK C-hooks.

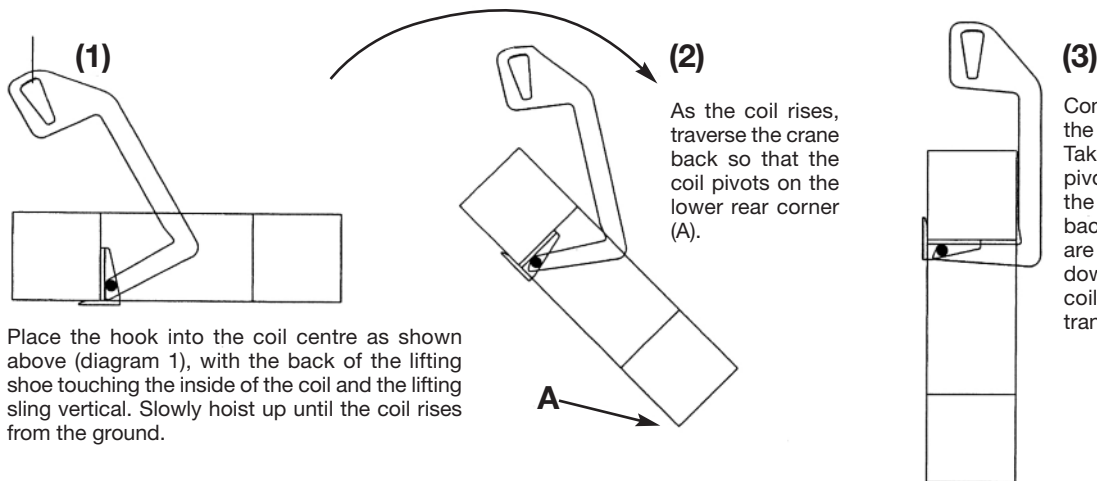


TCS 'UNIVERSAL' TURNING HOOKS



The TCS coil turning hooks are specifically designed to pick coils of steel or banding material etc when lying flat.

Once the turning hook is positioned and the crane hook is raised, the coil automatically transfers from the horizontal position to the vertical position. This allows for easy transportation and also allow for loading onto machines or racking.



Model	WLL* kgs	Coil mm	Min. internal dia. mm	Weight kgs
TCS 0.5 / 120	500	50 - 120	220	9
TCS 0.5 / 200	500	100 - 200	300	10
TCS 1.0 / 200	1000	100 - 200	300	13
TCS 1.0 / 300	1000	200 - 300	400	15
TCS 2.0 / 200	2000	100 - 200	300	21
TCS 2.0 / 300	2000	200 - 300	400	23
TCS 3.0 / 200	3000	100 - 200	300	34
TCS 3.0 / 300	3000	200 - 300	400	39

DL5 CABLE DRUM LUG WITH LOCKING LEVER

The DL5 cable drum lug with locking lever has been designed for the lifting, loading or transportation of steel or wooden cable reel drums.

The simple design allows the user to place the lugs either side of the drum, attach a two legged chain sling (not supplied) and lift.

The standard capacity supplied is 5000kgs over the pair however other sizes can be manufactured upon request.



* SOLD IN PAIRS



Model	WLL* kgs	Hole size mm	Weight kgs
DL 5	5000	82 x 85	11

*Per pair. • Please contact our sales team for full technical drawings.

CLT/CLB CONTAINER LIFTING LUGS

** Always read operating instructions prior to use.*

CLT for top lifting CLB for side lifting

Working load limit (WLL) 32000 - 56000kgs

These container lifting lugs are supplied in sets of 4 and are available with a total lifting capacity of up to 56 tonnes. The CLT and CLB lugs serve as flexible lashing points for the transportation of containers.

Two types are available dependant on whether you want to fasten them to the top or the side of the container:

The CLT type is vertically mounted in the hole at the top of the container and is locked into place by simply turning the lug 90°. This configuration allows for transportation via the use of a lifting frame in conjunction with cables, chains or slings.

The CLB model is mounted horizontally to the side of the container at either the top or the bottom fixing holes. This model has a spring loaded bolt to prevent accidental release.

NB. NOT TO BE USED ON A 4 LEG CHAIN SLING.



CLT
for top lifting



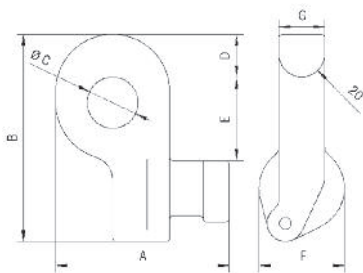
CLB
for side lifting

Model	WLL kgs	Type of lifting	Top angle between chains	A mm	B mm	C mm	D mm	E mm	F mm	G mm	Weight kgs*
CLB	32000 40000 50000	SIDE	50° 36° Vertical	152	181	45	37	73	75	40	18
CLT	56000	TOP	Vertical	123	217	45	39	57	101	121	28

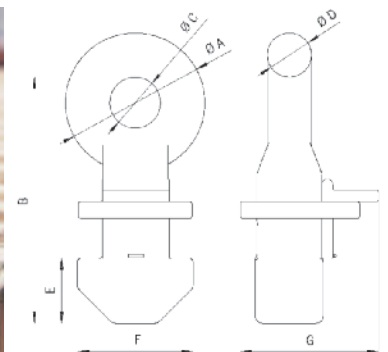
***Per set of 4.**



Container lifting lug
CLB



Container lifting lug
CLT



PR1500 PAPER REEL HEAD CLAMP




* Beams available upon request. Contact sales for details.



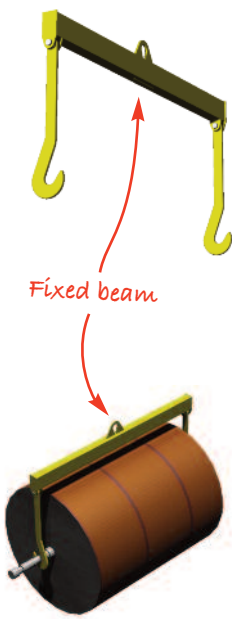
The PR1500 paper reel head clamp has been developed to lift single or, with the use of a spreader beam, several reels simultaneously. The design allows easy access to reels in confined spaces and is particularly useful for handling reels in open top freight boxcars, container ship holds and cargo storage facilities.

The clamp is fabricated from steel and is fitted with a polyurathane lining to ensure a safe grip and prevent damage to the load.

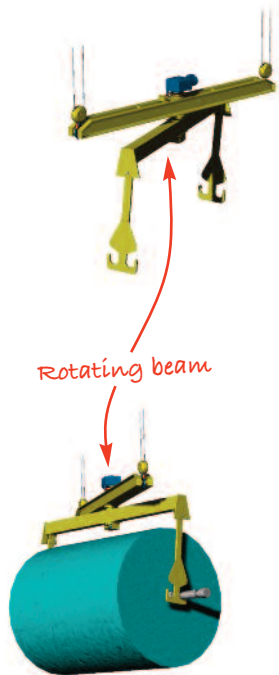
Model	WLL kgs*	Reel diameter mm	Weight kgs*
PR 1500	1500	900 - 1500	22

*Per set. • Other sizes available. Please contact the Camlok sales team for details.

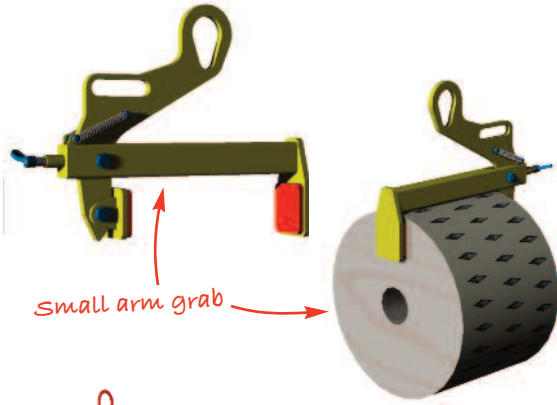
OTHER PAPER HANDLING OPTIONS:



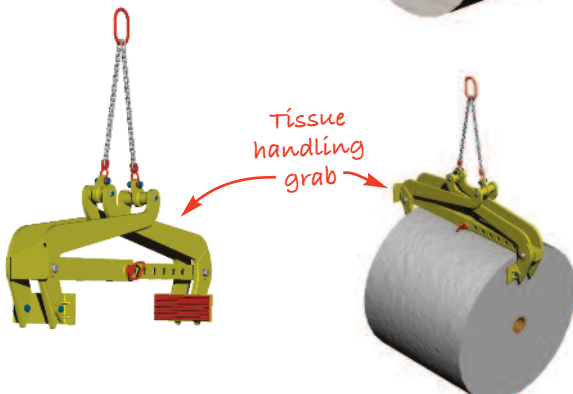
Fixed beam



Rotating beam



Small arm grab



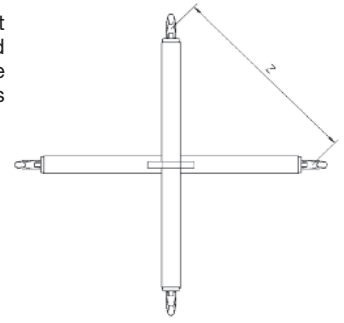
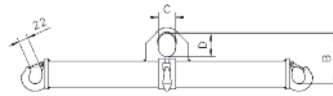
Tissue handling grab

A wide variety of different paper handling equipment is available from Camlok. As with most of our equipment, products can be adapted from existing designs to satisfy most customers specific requirements. Please contact the Camlok design department to find out more.

TTB BIG BAG LIFTERS

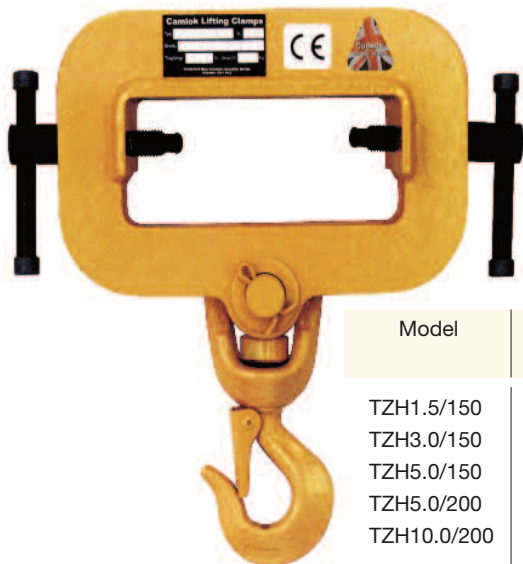


The **TTB big bag lifters** are designed to lift and transport large bags safely and securely. They are manufactured as a 4 point spreader beam in a fixed frame. The construction incorporates 4 hooks with safety latches that allow fast loading and unloading of the bags.



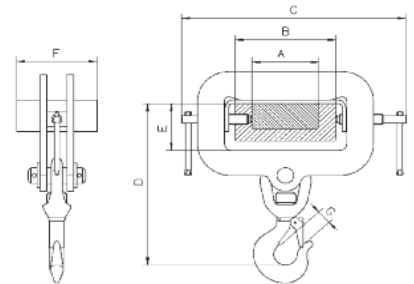
Model	WLL kgs	Width (Z) mm	B mm	C mm	D mm	Weight kgs
TTB 1/1090	1000	750 - 800	210	60	110	27
TTB 1/1320	1000	900 - 970	210	60	110	33
TTB 2/1090	2000	750 - 800	240	75	135	42
TTB 2/1320	2000	900 - 970	240	75	135	52

TZH ADJUSTABLE 'SINGLE' TINE HOOKS



The **TZH tine hook** is designed to convert your forklift truck into a crane. This is done by simply sliding the TZH onto a single tine. The tine hook is fastened to the tine by tightening the two threaded bars on either side.

The unit is supplied as standard with a swivel safety hook.



Model	WLL kgs	A mm	B mm	C mm	D mm	E mm	F mm	G mm	H mm	Weight kgs
TZH1.5/150	1500	100	150	310	360	260	74	120	25	8.5
TZH3.0/150	3000	100	150	350	400	270	74	120	28	12.0
TZH5.0/150	5000	100	150	350	400	295	74	120	34	16.0
TZH5.0/200	5000	150	200	440	490	320	94	180	34	16.0
TZH10.0/200	10000	150	200	440	490	420	94	180	45	43.0

FLTH ADJUSTABLE 'DUAL' TINE HOOKS

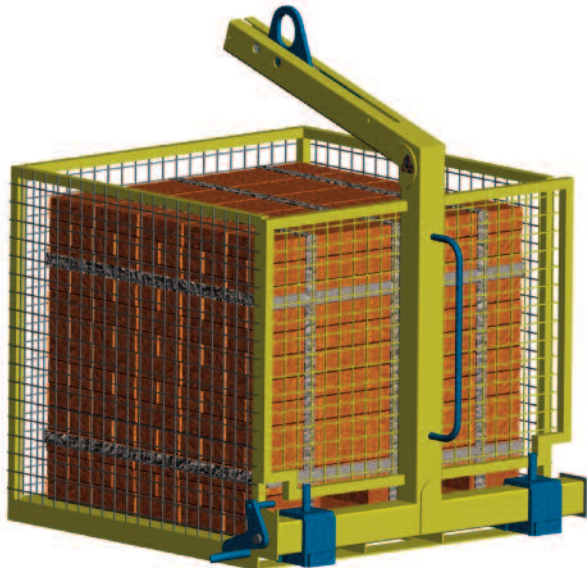


The **FLTH tine hook** is designed to convert your forklift truck into a crane. This is done by simply sliding the FLTH over the tines of your forklift truck. The FLTH is fastened to the tines by tightening the two threaded bars underneath each tine.

The unit is supplied as standard with a swivel safety hook.

Model	WLL kgs	Max. fork size mm	Weight kgs
FLTH 1	1000	120 x 60	25
FLTH 2	2000	120 x 60	37

CFA/M-C CRANE FORKS & SAFETY CAGE



The CFA/M-C crane forks have been specifically designed for lifting and moving palletised loads of bricks, blocks and bags of building material.

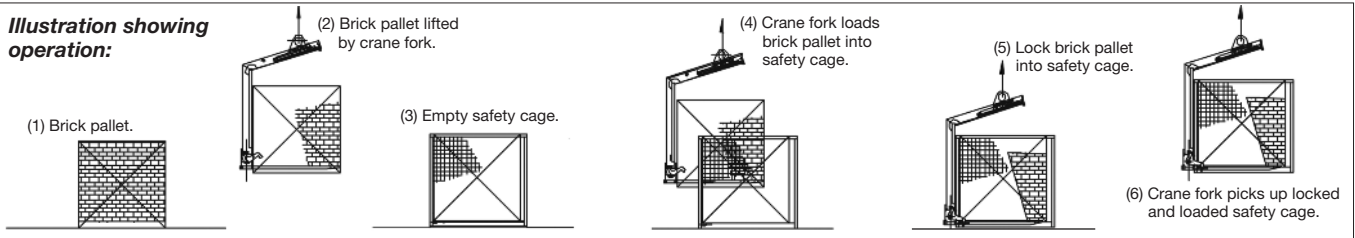
The units are supplied as standard with a safety cage to ensure the load does not move during transportation. This is particularly useful when moving smaller loose items, such as tools, bags or wheel barrows to high levels with a crane on a construction site. The safety cage has a simple, yet effective, quick locking mechanism.

These crane forks are available with either self weight or manual balancing.

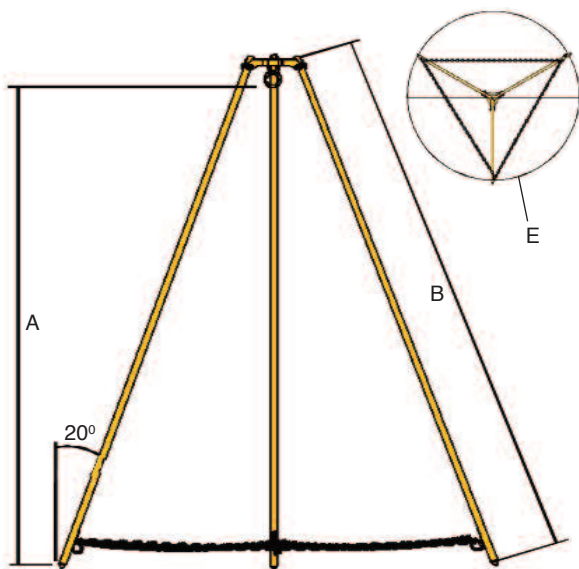
NB: These safety cages must not be used for lifting personnel.

Model	WLL kgs	Balance type	Weight kgs
CFM/C1	1000	Manual	190
CFA/C1	1000	Self balance	180
CFM/C2	2000	Manual	215
CFA/C2	2000	Self balance	205

Illustration showing operation:



SL SHEARLEGS



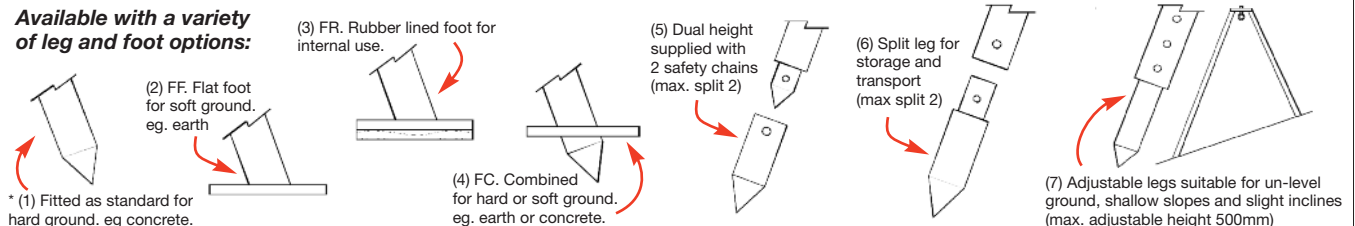
The Camlok Shearlegs have been designed to be simple and easy to erect and operate. Each set of shearlegs are supplied, as standard, fitted with safety chains and a large eyebolt for the suspension of hand operated lifting mechanisms, chain blocks or pulleys.

NB: These shearlegs must not be used for lifting personnel.

Model	WLL kgs	Height to eye mm	Leg length mm	PCD 'E' mm	Weight kgs
SL0.500/2	500	2000	2254	1800	24
SL1000/2	1000	2000	2276	1816	33
SL1000/3	1000	3000	3340	2544	44
SL1000/4	1000	4000	4411	3270	89
SL2000/3	2000	3000	3366	2554	71
SL2000/4	2000	4000	4430	3282	90
SL3000/3	3000	3000	3409	2730	88
SL3000/4	3000	4000	4473	3458	108

**Fitted with standard legs for hard ground. Call sales team for other options.*

Available with a variety of leg and foot options:



SB/MG SPREADERS, BEAMS, JIBS & GANTRIES

** whatever your requirements are, Camlok can design and engineer a solution!*

Spreader beams (WLL) 0 - 40000kgs

Spreader Beam

Camlok's spreader beams are the practical and safe choice for either long material to prevent sagging and shifting, or for loads where the weight has to be carefully distributed or suspended from several points.

The extensive standard programme offers a wide variety of payloads, working widths, adjustable ranges and hooks for common applications.

Model: TTS-E
with fixed lifting centre



The heavy duty and cost-effective standard types are complemented by various special designs made to a customer's specifications. These may include spreader beams with hooks for plate material, or with C-hooks, crane forks, or grabs for bulky and long materials. Special designs with laterally fixed hooks are fitted with slings to pick up rolls, pipes and similar objects.

Also available are the so-called 'star' spreader beams picking up cylindrical materials or spreader beams with side hooks and 4-point support which share the easy operation, reliability and safety of all Camlok spreader beams.

Model: MG2000
with external bracing



Mobile gantries (WLL) 0 - 3000kgs

Mobile Gantries

Camlok can design mobile gantries and jibs to suit any customer requirements or specifications. Gantries can be internally braced, externally braced or, for capacities up to 1000kg and with a maximum span of 3mtr, they can be un-braced.

Alternatively, legs can be fitted with flat plates for fixed positioning.

Gantries are also available with lockable castors.

****Camlok offer "made to measure" solutions for all your spreader, beams, jibs and gantry requirements. Just call the Camlok design department with your enquiry and they will do the rest!***

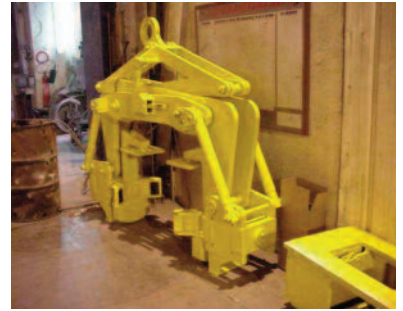
CAMLOK SPECIALS

'Bespoke design'

Camlok has a broad and diverse line of standard products that satisfy the requirements of the majority of lifting applications. However, Camlok engineers are often asked to design clamps and grabs for unusual and specific customer applications.

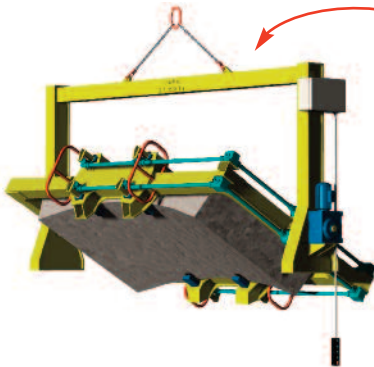
We have a full team of in-house design engineers who are there to help you with any 'oddball' enquiries you may come across.

All we need, off you, is a rough outline of what your application entails and we will endeavour to produce a budget price and general arrangement sketch.



Below are a few examples of some of the 'specials' that we have done to date:

** Whatever your requirements are, Camlok can design and engineer a solution!*



• Concrete tunnel - section turners

This section turner was specially designed to lift, turn and transport cast concrete tunnel ring segments for use on the English channel tunnel rail links.

• Remote control clamps

These clamps were designed for use in the hazardous environment of Nuclear Power Plant decommissioning. The clamps were used to lift and transport the sections from within the reactor to a waste holding area for safe disposal.



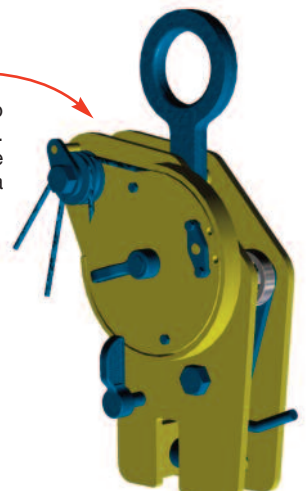
• Large cask grabs

This cask grab was designed to handle large stainless steel casks with flanged ends of a specified diameter. This particular model shown was designed for lifting casks containing wine.



• DT2 Drop test clamps

Designed for offshore coastal defences, this clamp was designed for use when reinforcing breakwaters. It was engineered to hold a suspended breakwater by the shackle and allow an operator to release the load in a controlled manner.



• 3 Jaw horizontal clamps

These 3-Jaw horizontal clamps were designed originally for a large construction site project. They were used to lift heavy bridge sections. Used in pairs, they had a working load limit of 20 tonnes.



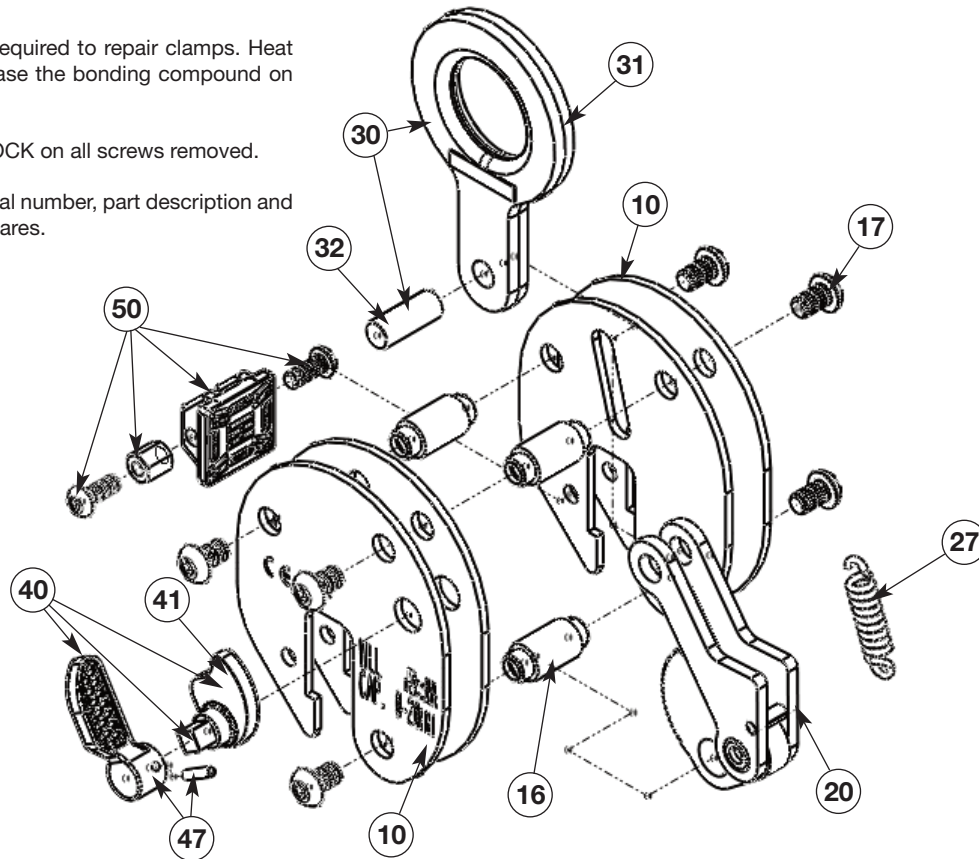
***Camlok offer "made to measure" solutions for all your lifting requirements. Just call the Camlok design department with your enquiry and they will do the rest!**

92 SERIES VERTICAL PLATE LIFTING CLAMPS

No specialist tools are required to repair clamps. Heat may be required to release the bonding compound on some screws.

After repair use STUDLOCK on all screws removed.

Always quote clamp serial number, part description and model when ordering spares.



Item	Description	92-500	92-1500	92-2000	92-3000
10	Shell plates (set of 4)	4300001206	4300001258	4300001265	4300001272
16	Shell pins (set of 3*)	4300001242	4300001263	4300001270	4300001274
17	Shell screws (6 off)	4300001241	4300001264	4300004776	4300001275
20	Internal assembly	4300001207	4300001259	4300001266	4300001266
27	Spring	4300001990	59210362	4300001073	4300001073
30	Hook ring assembly	4300001221	4300001261	4300001267	4300001273
31	Hook ring	4300004779	4300008076	4300008079	4300008082
32	Hook ring pin	4300003571	4300003315	4300004837	4300004837
40	Cam assembly	-	4300001260	4300001049	4300001268
41	Cam	-	4300008077	4300008080	4300008080
47	Locking lever and pin	-	4300008078	4300008081	4300008081
50	Pad assembly	4300001222	4300001262	4300001022	4300001269
60**	Jaw bolt assembly	4300001992	-	-	-

*Set of 2 on 92-500 **Not shown in exploded diagram

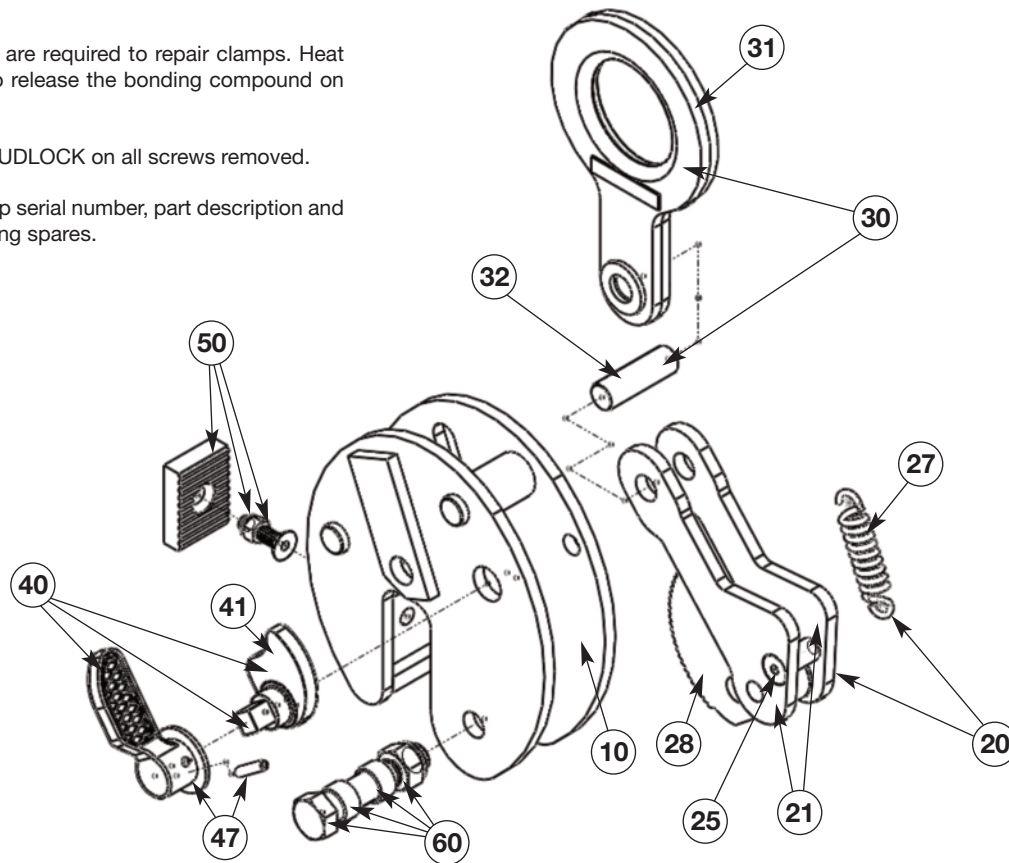
"Only use genuine Camlok lifting clamp spare parts!"

CZ VERTICAL PLATE LIFTING CLAMPS

No specialist tools are required to repair clamps. Heat may be required to release the bonding compound on some screws.

After repair use STUDLOCK on all screws removed.

Always quote clamp serial number, part description and model when ordering spares.



Item	Description	CZ1	CZ2	CZ3	CZ4	CZ6
10	Shell welded assembly	4300001291	4300001298	4300001303	4300001425	4300008403
20	Internal assembly	4300001292	59110320	59110320	4300001439	4300001439
21	Internal links (2 off)	4300008323	4300008330	4300008330	4300008396	4300008396
25	Internal pin	4300008322	4300008329	4300008329	4300008395	4300008395
27	Spring	59000345	59110107	59110107	59210318	59210318
28	Jaw	4300001293	59110318	59110318	59210317	4300001442
30	Hook ring assembly	4300001295	4300001301	4300001304	4300001449	59110142
31	Hook ring	4300008319	4300008419	4300008331	4300002099	4300008445
32	Hook ring pin	4300008320	4300004399	4300004399	4300008397	4300008397
40	Cam assembly and lever	4300002063	4300001049	4300001049	59110143	59110143
41	Cam	4300002978	4300008080	4300008080	4300008080	4300002979
47	Lever	4300008321	4300008081	4300008081	4300008398	4300008398
50	Pad assembly	59000346	59110315	59110315	59110144	59110144
60	Jaw bolt assembly	59000347	59110136	59110136	4300001464	4300001464

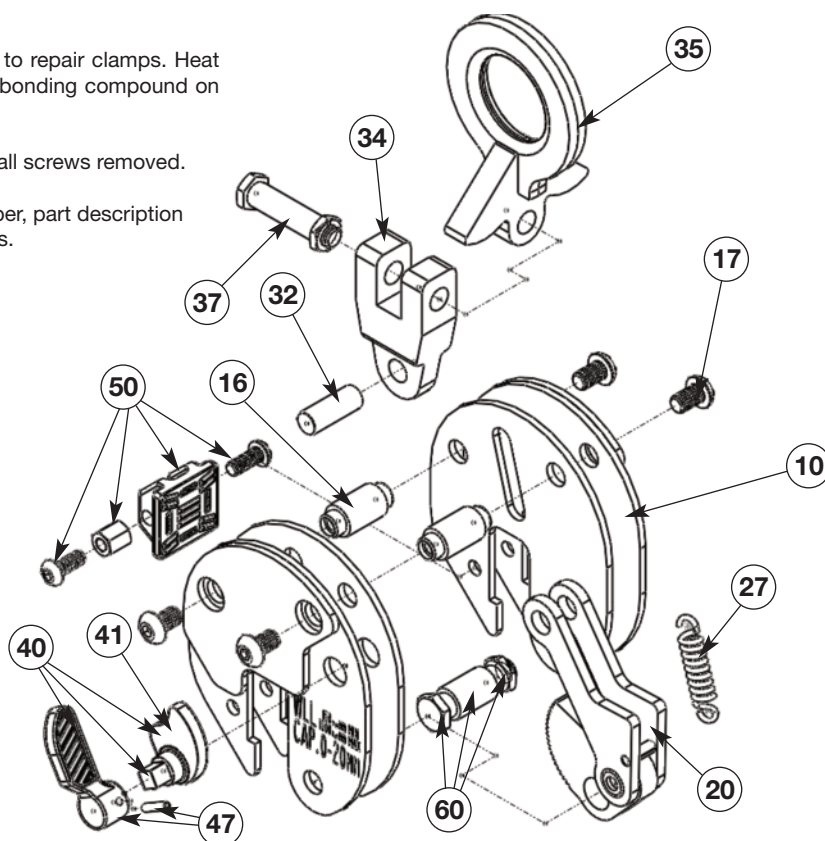
"Only use genuine Camlok lifting clamp spare parts!"

CY 'HINGED' VERTICAL PLATE LIFTING CLAMPS

No specialist tools are required to repair clamps. Heat may be required to release the bonding compound on some screws.

After repair use STUDLOCK on all screws removed.

Always quote clamp serial number, part description and model when ordering spares.



Item	Description	CY1	CY2	CY3
10	Shell plates (set of 4)	4300001276	4300001283	4300001285
16	Shell pins (2) each	4300001263	4300001274	4300001274
17	Shell screws (set of 4)	4300008258	4300008317	4300008317
20	Internal assembly	4300001277	4300001284	4300001284
27	Spring	4300001071	4300001073	4300001073
32	Hook ring pin	4300003315	4300004837	4300004837
34	Hook ring fork	4300001280	4300001289	4300001289
35	Swivel hook ring	4300001281	4300001287	4300001287
37	Eye bolt and nut	4300001282	4300001290	4300001290
40	Cam assembly	4300001278	4300001288	4300001288
41	Cam	4300008077	4300008080	4300008080
47	Locking Lever and pin	4300008315	4300008318	4300008318
50	Pad assembly	4300001262	4300001269	4300001269
60	Jaw bolt assembly	4300001279	4300001286	4300001286

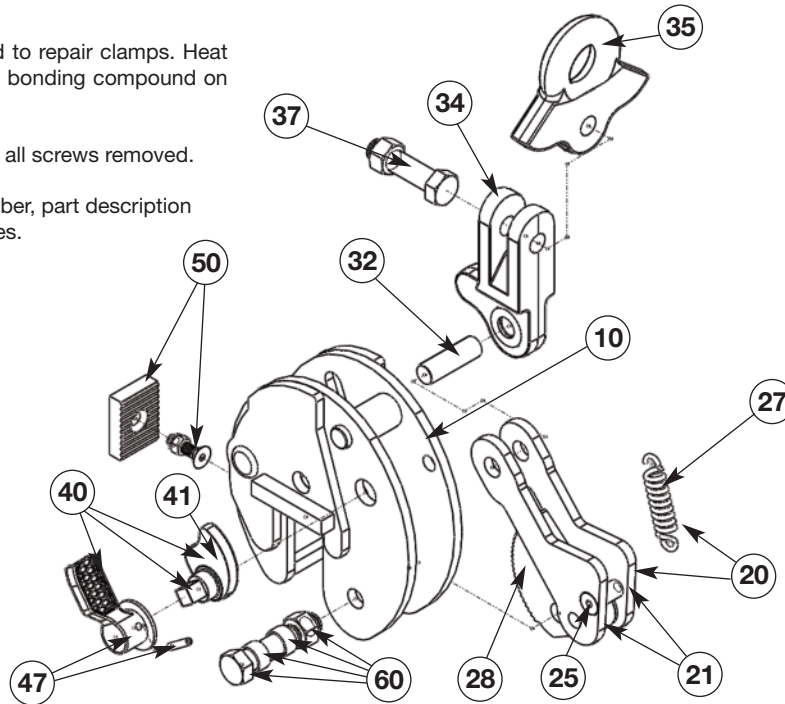
"Only use genuine Camlok lifting clamp spare parts!"

CX 'HINGED' VERTICAL PLATE LIFTING CLAMPS

No specialist tools are required to repair clamps. Heat may be required to release the bonding compound on some screws.

After repair use STUDLOCK on all screws removed.

Always quote clamp serial number, part description and model when ordering spares.



Item	Description	CX1500	CX3000	CX6000
10	Shell welded assembly	4300001288	4300001707	4300001790
20	Internal assembly	4300001292	59110320	4300001439
21	Internal links (2 off)	4300008323	4300008330	4300008396
25	Internal pin	4300008322	4300008329	4300008395
27	Spring	59000345	59110107	59210318
28	Jaw	4300001293	4300001300	59210317
32	Fork pin	4300008320	4300004399	4300008459
34	Fork	4300001704	4300001692	4300008457
35	Eye cam	4300001693	4300001758	4300001850
37	Pivot bolt and nut	4300004819	4300001841	4300008460
40	Cam ass. and locking lever	4300001691	4300001723	59210315
47	Locking Lever	4300008455	4300008456	4300001814
50	Pad assembly	59000346	59110315	59210334
60	Jaw bolt assembly	59000347	59110136	4300008458
71**	Master link	4300008508	4300008515	4300008581
72**	Connecting link	4300008509	4300008516	4300008582

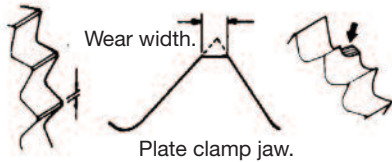
****Not shown in exploded diagram**

"Only use genuine Camlok lifting clamp spare parts!"

CAMLOK SAFETY VERTICAL PLATE CLAMPS

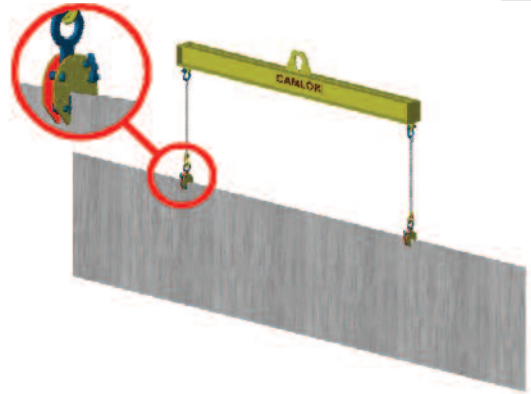
RIGHT ✓ FOR LIFTING LONG PLATES

TWO CLAMPS AND A LIFTING BEAM MUST BE USED



Chipped teeth are only acceptable if the chip is less than half the width of the tooth and the adjoining teeth are undamaged.

Plate at full depth and lever in locked position.



RIGHT ✓ FOR LIFTING SHORT LENGTH PLATES

A SINGLE CLAMP CAN BE USED

- Always read operating instructions before use.
- Plate must be free from grease, liquids, scale or paint.
- Always check the operation of the clamp before use.
- Never use damaged or worn clamps. Report damaged equipment to the relevant person.

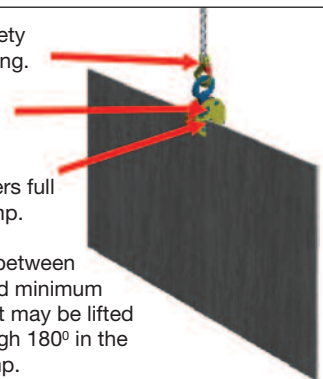


Always use a safety hook or safety sling.

Check lever is in locked position.

Ensure plate enters full depth of the clamp.

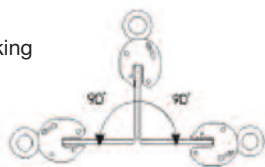
Loads weighing between the maximum and minimum working load limit may be lifted and turned through 180° in the plane of the clamp.



RIGHT ✓ FOR TURNING OVER PLATES

PLATE MUST BE IN CONTACT WITH BACK OF CLAMP

Loads weighing between the maximum and minimum working load limit may be lifted and turned through 180° in the plane of the clamp.

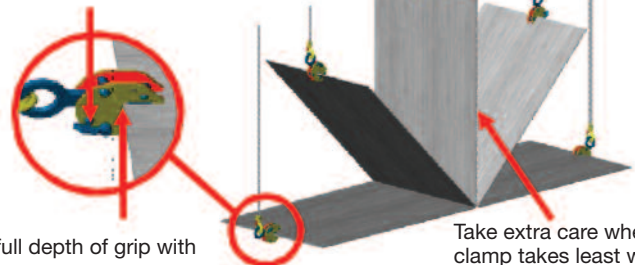


If locking lever is uppermost it is necessary to lift the clamp when sliding onto the plate to allow free movement of the jaw.

Ensure full depth of grip with locking lever in locked position.

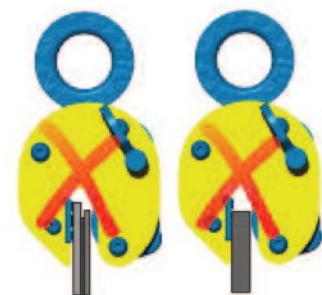
Lifting sling must be vertical for all positions.

Take extra care when clamp takes least weight at "top dead centre".



WRONG X

Always ensure that the plate is positioned to the back of the clamp.



Only lift one plate at a time.

For long plates a beam must be used. Do not use endless chain slings.

Always check positioning of clamp before use.

For this type of lift use CY/CX hinged plate clamps only.

When the clamp is wrongly positioned it will reposition itself on reaching top dead centre and may release the plate.

Insufficient slack in sling.

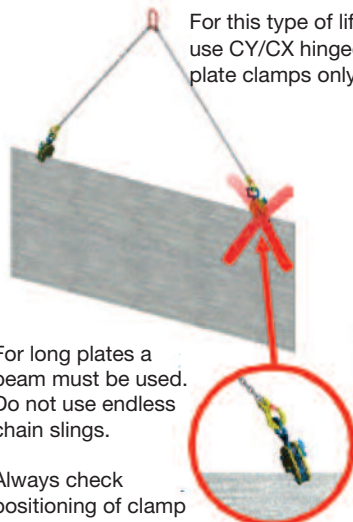
Operating lever only moves part way and plate is not released.

Do not force but tap chain lug if stuck.

Force will cause failure of camshaft.

Do not fast lower onto floor as crane hook will force open the clamp and release the plate.

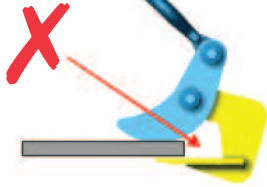
Do not lower if lever is not in the locked position.



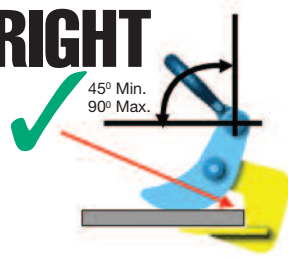
CAMLOK SAFETY HORIZONTAL / GIRDER / SCREWLOK CLAMPS

HORIZONTAL PLATE CLAMPS

WRONG



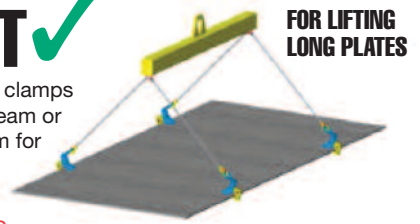
RIGHT



RIGHT

Use 2 pairs of clamps and a lifting beam or spreader beam for long plates.

DO NOT USE 4 LEG SLINGS.



WRONG



Check the plate is in contact with the back of the clamp.

Bundles must be the same width and size.

Clamps with teeth can only lift one plate at a time.

RIGHT

Use one pair of clamps for short plates.

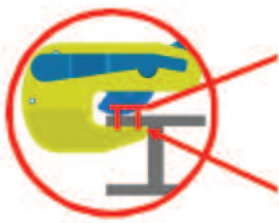
DO NOT USE ENDLESS CHAIN SLINGS.



GIRDER / SECTION CLAMPS

CG, TTR & TTG CLAMPS

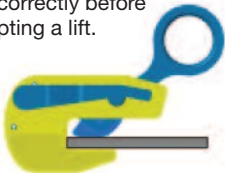
Use on small sections.



Jaw in contact with sufficient surface area to grip load safely.

Front of clamp in contact with load.

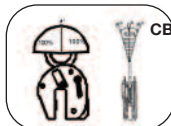
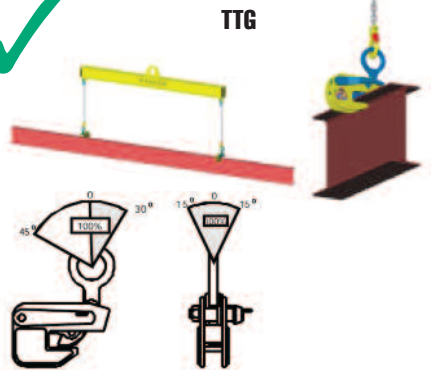
Always ensure the clamp is fitted correctly before attempting a lift.



RIGHT

For long girders use 2 clamps and a lifting beam.

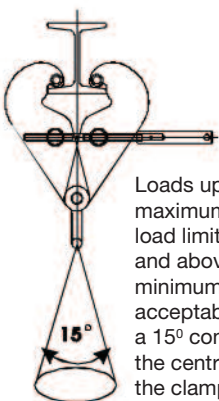
For short sections one clamp may be used.



ALWAYS READ OPERATING INSTRUCTIONS BEFORE USE.

SCREWLOK BEAM CLAMPS

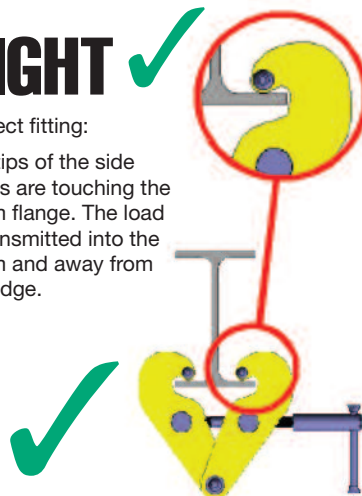
ALWAYS READ OPERATING INSTRUCTIONS BEFORE USE.



RIGHT

Correct fitting:

The tips of the side plates are touching the beam flange. The load is transmitted into the beam and away from the edge.

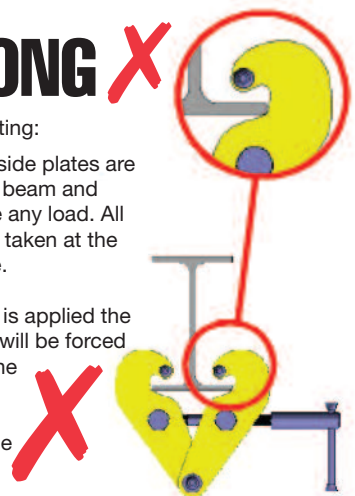


WRONG

Incorrect fitting:

Tips of the side plates are clear of the beam and cannot take any load. All the loads is taken at the flange edge.

As the load is applied the side plates will be forced apart and the adjustment bar is put under tensile load.



INDEX

Article	Page	Article	Page	Article	Page
A					
ACH 'adjustable' horizontal clamps	12				
B					
BA bulb bar anchors	17				
Beam clamps	16-17				
Big bag lifters	36				
Block grabs	31				
Board clamps	23				
BTG concrete pipe lifting clamps	24				
Bulb section lifting clamps	18				
Bulb bar anchors	17				
C					
C-hooks	32				
Camlok spare parts	40-43				
Carriage	3				
CB bulb section lifting clamps	18				
CFA/M-C crane forks/safety cage	37				
CG 'standard' girder turning clamps	19				
CH horizontal plate clamps	10				
CLB 'side' lifting lugs	34				
CLT 'top' lifting lugs	34				
Coil grabs	31				
Company profile	2				
Concrete pipe lifting clamps	24				
Conditions of sales	47				
Contact details	3				
Container lifting lugs	34				
Contents page	5				
CP pile pitching clamps	25				
Crane forks	26-27				
CR single rail clamps	20				
CX 'hinged' vertical plate clamp	8				
CX 'hinged' vertical clamp (spares)	43				
CY 'hinged' vertical plate clamp	8				
CY 'hinged' vertical clamp (spares)	42				
CZ vertical plate clamps	7				
CZ vertical plate clamp (spare parts)	41				
D					
DA/DAF 'low headroom' drum grabs	28				
DBT500 drum grab	29				
DBV500 drum grab	29				
DC500 drum clamp	28				
DCV500 'vertical lift' drum clamp	28				
Distributor network	4				
DL5 cable drum lug	33				
Drum clamps	28				
DT 'horizontal lifting' drum tongs	29				
F					
FLTH dual tine hooks	36				
G					
Girder clamps	19				
H					
HGC hand grip clamps	23				
HG vertical plate clamp	9				
HH horizontal plate clamps	10				
Hinged vertical plate clamps	8				
High grip plate clamps	9				
Horizontal plate clamps	10-12				
L					
Lifting magnets	22				
Lifting lugs	34				
LJ non marking plate clamps	14				
M					
Magnetic claws	23				
Magnets	22				
Marketing support	3				
Mobile gantries	38				
MRC 'interchangeable' multi rail grabs	21				
MR 'fixed' multi rail grabs	21				
Multi rail clamps	21				
N					
Non-marking plate clamps	11, 14 & 23				
P					
Paper reel head clamp	35				
Permanent lifting magnets	22				
PH pipe hooks	25				
Pile pitching clamps	25				
Pile pulling clamps	25				
Pipe hooks	25				
PP pile pulling clamps	25				
Profile steel grabs	18-19 & 31				
PR1500 paper reel head clamp	35				
Q					
Quality & Safety	4				
R					
Rail clamps	20-21				
Reinforced beam clamps	16				
RH horizontal plate clamps	11				
RP rail pulling clamps	20				
Round stock grabs	30				
S					
Safety instructions	44-45				
Safety cages	37				
SC 'standard' beam clamps	16				
SC92 beam clamps with shackle	16				
SCA 'angle clamp' beam clamps	17				
SCB bulb bar clamps	17				
SCS 'swivel jaw' beam clamps					
	17				
Screw clamps					
	15				
Shearlegs					
	37				
Single rail clamps					
	20				
SL shearlegs					
	37				
Spare parts					
	40-43				
Spreader beams					
	38				
Standard horizontal plate clamps					
	10				
Standard vertical plate clamps					
	6				
Standard vertical clamp (spare parts)					
	40				
T					
TACH 'twin arm' C-hook	32				
TAG 'wide jaw' universal clamps	13				
TBG block grabs	30				
TCK 'single arm' C-hook	32				
TCS 'universal' turning hooks	33				
TDI inside coil grab	31				
Terms and conditions	47				
THK 'thin sheet' plate clamps	12				
Thin sheet plate clamps	12				
THM magnetic claws	23				
THS 'loading' horizontal clamps	12				
Tine hooks	36				
TJC 'twin jaw' vertical plate clamp	9				
TKG-VH 'manual' crane forks	26				
TKG-VHS 'automatic' crane forks	27				
Training school	4				
TPM permanent lifting magnets	22				
TPR profile steel grabs	31				
TPZ board clamps	23				
TRU round stock grabs	30				
TSA block grab	31				
TSB non marking 'friction' clamps	14				
TSD 'standard' screw clamps	15				
TSH 'swivel hook' screw clamps	15				
TSZ 'two way' screw clamps	15				
TTB big bag lifters	36				
TTG 'horizontal' girder clamps	19				
TTR 'vertical' girder clamps	19				
TTT horizontal girder clamps	18				
Turning hooks	33				
Twin jaw vertical plate clamps	9				
TZH single tine hooks	36				
V					
Vertical plate clamps (spare parts)	40-43				
W					
WH horizontal plate clamps	11				
WHL horizontal plate clamps	11				
WHP horizontal plate clamps	11				
Wide jaw clamps	9				
TWG 'wide jaw' universal clamps	13				
Y					
YRC 'reinforced' beam clamps	16				

CONDITIONS OF SALE

Camlok Lifting Clamps, a trading division of Columbus McKinnon Corporation Limited (hereafter called "The Company") draws attention to the following terms and conditions, which shall apply to all orders accepted and supplies made to the exclusion of any other terms and conditions whatsoever.

- 1. DELIVERY.** Any delivery date given shall be subject to confirmation or revision by the Company at the time of acceptance of an order. The Company will then employ all reasonable means to make delivery within the time stated, but cannot accept any liability whatsoever for any loss or damage arising out of or in connection with late delivery or non-fulfilment of contract. The company shall be entitled to defer delivery until any monies due from buyer has been received. The company shall also be entitled to make partial deliveries by installments and each installment shall constitute a separate agreement. Should delivery be delayed by the buyer's instructions or lack of instructions or by any cause whatsoever beyond the Company's reasonable control including strikes, lock-out labour disputes, war, act of God, embargo, government regulations, fire, flood, accident, shortage of or delay in obtaining materials or any other causes of similar character then a reasonable extension of time shall be granted.
- 2. PRICE.** All prices quoted are exclusive of carriage, which will be charged separately unless otherwise stated and those ruling at the date of this quotation and subject to V.A.T. Any orders accepted by the Company shall be invoiced and paid for at the Company's prices ruling at the date of dispatch.
- 3. ACCEPTANCE OF ORDERS.** Any quotation and acceptance thereof shall not constitute a contract to supply. The contract between the Company and the buyer shall only be formed when the buyer's order is formally accepted in writing by the Company.
- 4. ADDITIONS / MODIFICATIONS.** No additions or modifications to these conditions of sale shall be deemed to have been accepted by the Company or form any part of any contract between the Company and the buyer unless the Company has first agreed in writing to such additions or modifications.
- 5. IMPROVEMENTS AND CHANGES.** The Company reserves the right to make improvements or changes in the engineering specification of any goods without first referring to the buyer.
- 6. CANCELLATION.** The buyer shall not be entitled to cancel any contract unless the Company has first agreed in writing to such cancellation. Any cancellation by the buyer will be subject to a cancellation charge, which will be determined by the Company and paid by the buyer as a precondition to the Company's acceptance of the buyer's cancellation.
- 7. SHORTAGES.** The buyer shall be deemed to have accepted the quantity of goods delivered as being in accordance with the buyer's order unless within 7 days from receipt of the same the buyer has notified the Company in writing of any shortage.
- 8. TITLE AND RISK.** Risk in the goods shall pass to the buyer at the time of despatch from the Company's works and the Company shall not be liable for any loss or damage whatsoever to the goods, which may occur after that time. Title in the goods shall remain with the Company until such time as full payment for the goods is made. Until such time, the Company shall be entitled to recover the goods or any part thereof. And for the purpose of exercising such rights the Company its employees and agents with appropriate transport may enter upon the buyer's premises and any other location where the goods are situated. Furthermore, if payment is not received and the buyer should be wound up or a receiver appointed over the whole or part of the buyers undertaking or an execution of distress levied against the buyer, the Company shall be entitled to enter and repossess the goods or trace the goods or the proceeds of sale in your hands or in the hands of any liquidator or receiver.
- 9. TERMS OF PAYMENT.** Unless otherwise agreed by the Company in writing, all invoices must be paid without retention or set-off, on or before the last day of the calendar month following the month in which they were invoiced or as stated in the Company's quotation. Failure to pay the full amount due will entitle the company without notice and without prejudice to its other rights, to refuse to effect delivery or allow collection by any agent of the buyer, or any further consignment of goods without incurring any liability whatsoever to the purchaser. The Company reserves the right to charge the buyer interest on any amount overdue at the rate of 2% over the standard Bank of England base rate current at the time the account becomes due.
- 10. NON-ASSIGNMENT.** The contract or any party thereof shall not be assigned by the buyer without the written consent of the company.
- 11. LIQUIDATION.** If the buyer shall make default in or commit any breach of any of his obligations to the Company or if any distress or execution shall be levied upon the buyer's property or assets or if the buyer shall make or offer to make any arrangements or composition with creditors or commit any act of bankruptcy or if any petition or receiving order in bankruptcy shall be presented or made against him or if the buyer shall be a limited company and any resolution or petition to wind up such company's undertaking, property or assets, or any part thereof, shall be appointed, the Company shall have the right forthwith to determine any contract and to cancel any outstanding delivery or deliveries and to stop any goods in transit, but all without prejudice to any remedy which the Company may have in respect of the consequential non-complete or non-performance of the contract.
- 12. WARRANTY.** All equipment complies with the high standards of quality established by the Company both in respect of materials and workmanship and as the sole and exclusive remedy in discharge of this warranty the Company undertakes to replace free of charge within 360 days from date of despatch from its works any components of its manufacture, which are proved to the satisfaction of the Company (whose decision shall be final and binding) to be defective in materials and workmanship provided notice in writing to the Company is given within 10 days of the defect occurring and provided the component which is the subject of the complaint, if the Company so requests returned pre-paid to the Company's works at Chester In the case of defective components or parts not of the Company's manufacture the Company's liability shall be limited to such adjustment or allowance as the manufacturer there of shall make. The Company shall not accept responsibility for such work done or expense incurred by the buyer in connection with any repair or replacement unless the Company's prior written authorisation has been obtained. This warranty is in lieu of and excludes all other conditions and warranties whatsoever whether expressed or implied and whether under common law, statute law or otherwise and apart from aforesaid the Company hereby expressly excludes all liability for any loss or damage whatsoever arising and howsoever caused. The buyer warrants that it will pass on, to all third parties to whom it may supply the goods, all information as to the use and safe handling of the goods, as may have been passed onto the buyer by the Company.
- 13. DESIGN AND MANUFACTURE.** Where goods are made to the buyer's specifications, instructions or design, the buyer undertakes full responsibility for the suitability and accuracy of the specifications, instructions or design and undertakes to indemnify the Company for any loss, damage or expense in respect of any liability arising under the provisions of the Consumer Protection Act 1987 in relation to the specification or design of such goods. The Company confirms all specifications within a quotation that is valid for 30 days from the date of quotation.
- 14. LEGAL CONSTRUCTION.** The contract shall in all respects be constructed and operate as a contract governed by English Law and unless otherwise agreed, is subject to the jurisdiction of the English Court. The legal construction of the clauses shall not be affected by their titles.

Whilst every endeavour has been made to supply equipment as described in this catalogue, all items are offered subject to availability and Camlok can accept no responsibility for mistakes in the text. It may sometimes be necessary to offer an alternative Camlok product to those selected. However, the performance and the integrity will be of the same high quality as you would expect from Camlok Lifting Clamps.

Due to our policy of continual development, we reserve the right to change dimensions, weights, specifications, discounts, and prices without prior warning. Please check with the Camlok sales team when ordering.

Your local authorised Camlok distributor:

UK Head Office:

Camlok Lifting Clamps

a trading division of Columbus McKinnon Corporation Limited
Knutsford Way, Sealand Industrial Estate, Chester CH1 4NZ

Tel: +44 (0) 1244 375375

Fax: +44 (0) 1244 377403

E-mail: sales@camlok.co.uk

Web Site: www.camlok.co.uk

Training School:

Columbus McKinnon Centre Of Excellence

Unit 7, Durley Park Close, North Cheshire Trading Estate,
Prenton, Wirral CH43 3DZ

NI and ROI Office:

Unit 1A, The Ferguson Centre, 57 - 59 Manse Road
Newtownabbey, BT36 6RW

Tel: +44 (0) 2890 840697

Fax: +44 (0) 2890 343673

E-mail: sales@yaleip.co.uk

Web Site: www.yaleproducts.com